

Joint Research Centre

the European Commission's in-house science service

*Serving society
Stimulating innovation
Supporting legislation*

The European Union Location Framework

Workshop on “Methodologies for
energy performance assessment
based on location data”

Ispra, 12-14 September 2016

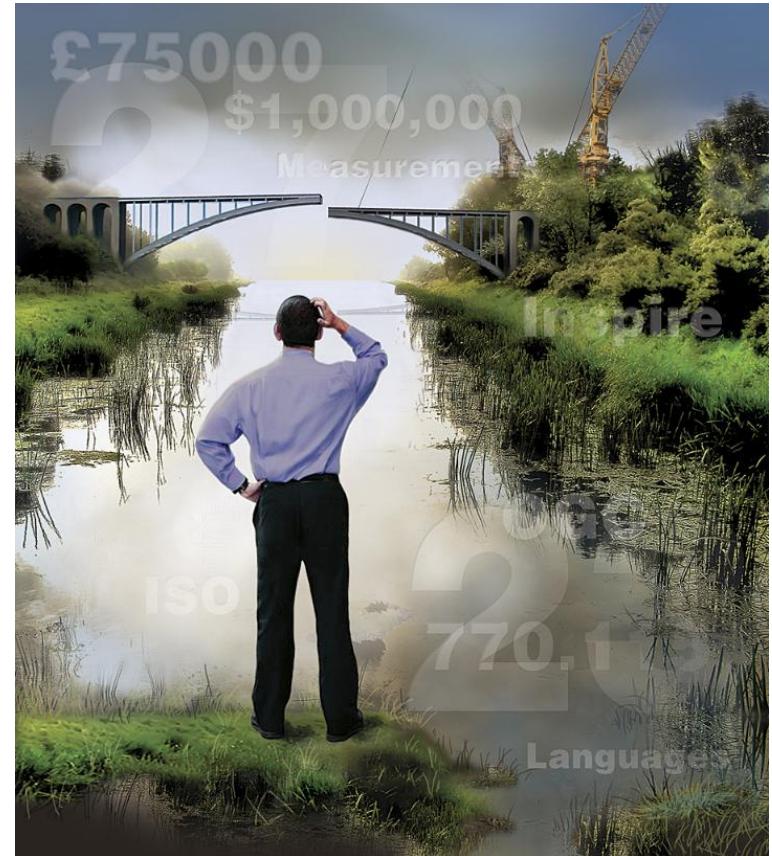
www.ec.europa.eu/jrc

Purpose of **INSPIRE**?

Europe is a patchwork of several countries with different traditions, cultures and socio-economic models and historic backgrounds

This is reflected in the different ways in which **geospatial data** (any kind of data related to **location**) is managed:

- **Organisational:**
roles and responsibilities...
- **Legal:**
agreements, licensing policies...
- **Technical:**
access, download, formats...
- **Semantic:** definitions of data...



INSPIRE, Europe's *lingua franca* for anything geospatial

Directive 2007/2/EC of the European Parliament and of the Council of 14 March 2007 establishing an Infrastructure for Spatial Information in the European Community (INSPIRE)

Institutional framework	Technical standards
Fundamental data sets	Data Services

Distributed infrastructure



28 countries
24 languages

General rules for establishment



Environment & sustainability

34 spatial data themes

Entry into force on 15/05/2007

Set of European legal acts and their coordinated implementation

Directive 2013/37/EU of 26 June 2013
amending Directive 2003/98/EC on the **re-use**
of public sector information (PSI)
Directive 2003/98/EC

Communication from the Commission to the European Parliament, the Council,
the European Economic and Social Committee, and the Committee of the
Regions: **A Digital Agenda for Europe** - COM(2010) 245 final/2

Digital Single Market

Towards **interoperability for European public services** COM(2010) 744

EU implementation of the **G8 Open Data Charter**

EU Open Data Strategy

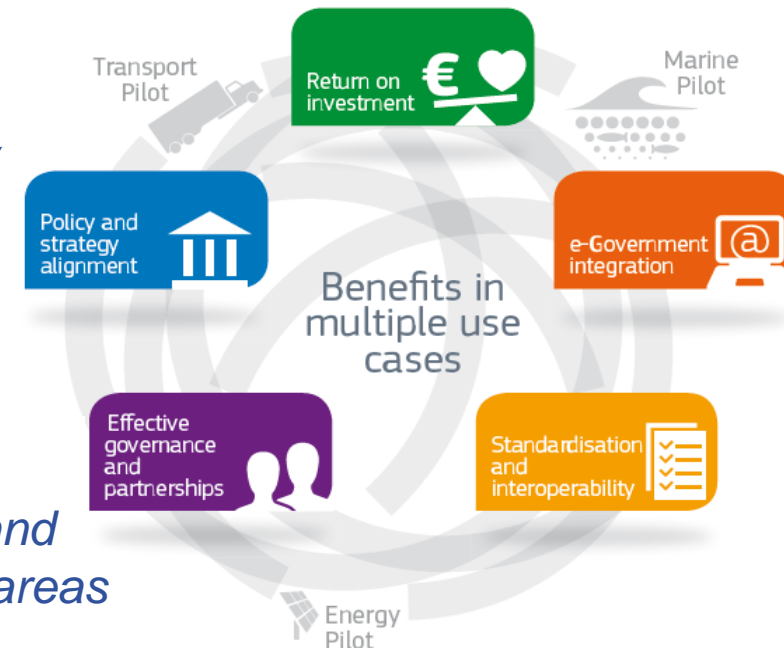
Business as **unusual**: the EU Location Framework

- Removes obstacles for the **free flow of data** in support of the **Digital Single Market**
- **Promotes INSPIRE** as a multi-purpose infrastructure for a range of **policy areas**, including e-government, transport, marine, and energy
- Identifies and promotes opportunities for the **private sector**

*Strategic framework
based on EU survey*

*Practical problems solved
through pilot studies*

*Recommendations and
guidance in 5 focus areas*



*Working together with
MS to address priorities*

Delivering savings, growth and better services
through "location-enabled government"

INSPIRE... and beyond: EULF Pilots



**INSPIRE
Directive**

**Environmental
Sector**



EULF: provides the strategic framework, turning its recommendations into action and learning from the results



**Transport
Sector**

ITS Directive



**Marine
Sector**

**MSFD Directive
Marine
Knowledge 2020**



**Energy
Sector**

**COM SEAPs,
EPBD and EED
Directives**

EULF follow up

- The **demand** for location-related information is growing
- It plays an important role **supporting** in many EU and national **policies** and in **applications** used by public authorities, businesses, citizens
- The private sector is increasingly supplying location-related data to government or using government data: **better partnering** is essential
- Recent policy evaluations (e.g. PSI, INSPIRE, DSM) show that public authorities need to **improve** (geo)data management and reuse
- PSI is seen as an engine for **job creation**, especially geospatial data
- The links between **location and statistics** need to be better exploited
- EULF and ARENA have created **complementary frameworks**, tools and pilot applications ready for enhancement through ISA²
- **Common solutions/services** are needed in, for example: EU gazetteer, address registries, open EU mapping (recognising work in other DGs)
- **Technological impacts** of big data, linked open data, cloud infrastructures and Internet of Things need to be widely understood

ELISE Action (2016-2020)

- European Location interoperability solutions for e-Government
- Part of the Programme “Interoperability solutions for Public Administrations, Businesses and Citizens” (ISA²)
- Facilitating efficient and effective electronic G2G/C/B cross-border/sector interactions
- Targets support to Digital Single Market, Better Regulation and Public Sector Modernisation
- Acts as the ‘geo’ knowledge-base for ISA²
- Addresses barriers in the free flow of location-related information, including for private sector processes/products
- Builds on INSPIRE, EULF and ARE3NA (and other ISA Actions)