

# WORKSHOP: Technical training on how to set Targets for the Global Covenant

**The European Commission's  
science and knowledge service**  
Joint Research Centre



# The European Commission's science and knowledge service

Joint Research Centre

## Overview JRC role and support

**Silvia Rivas Calvete**

**Godoy Cruz**

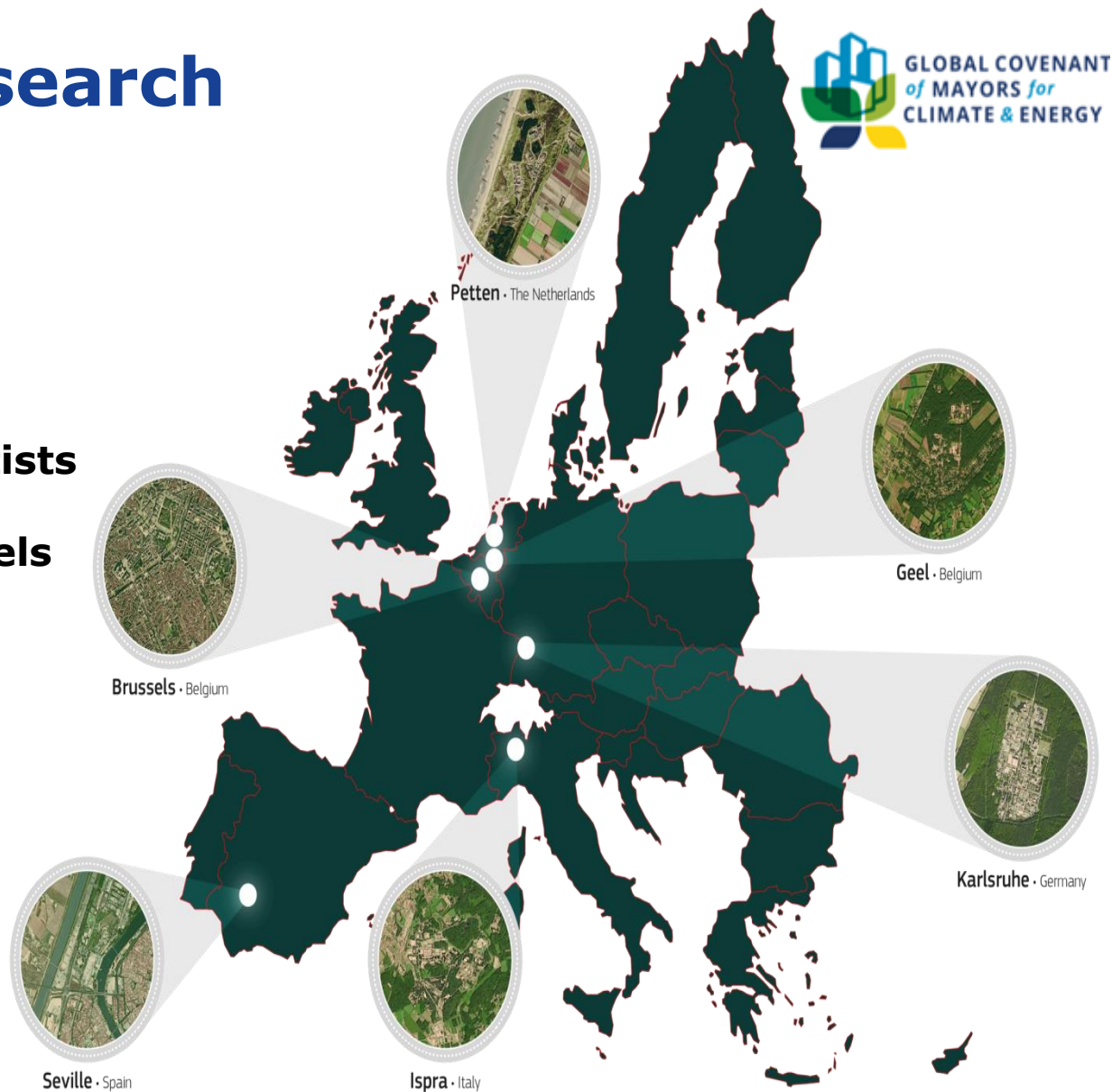
**26 September 2017**



European  
Commission

# The Joint Research Centre at a glance

**3000 staff**  
**Almost 75% are scientists and researchers.**  
**Headquarters in Brussels and research facilities located in 5 Member States.**



# The Joint Research Center



## The Joint Research Centre is a Directorate General of the European Commission

### *Vision:*

*"To play a central role in creating, managing and making sense of the collective scientific knowledge for better EU policy."*

### *Mission:*

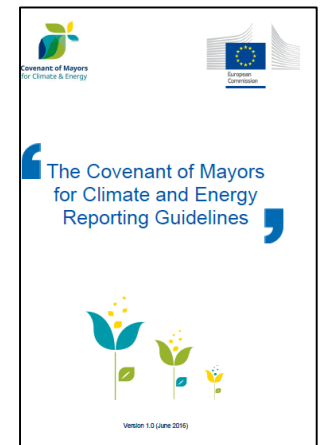
*"As the science and knowledge service of the Commission our mission is to support EU policies with independent evidence throughout the whole policy cycle."*

# The JRC CoM role

To ensure the overall scientific coherence of the initiative, by providing scientific-technical support to the development, implementation and monitoring of the CoM

## Set the methodological basis of the initiative including

- Guidebooks for local authorities
- Development of specific reporting monitoring tools & instructions



## Approval and SE(A)CAP feedback procedure

# The JRC CoM role

Methodological adaptation  
(Regions of the world)

Overall assessment

Capacity building  
(technical trainings for cities and regions)

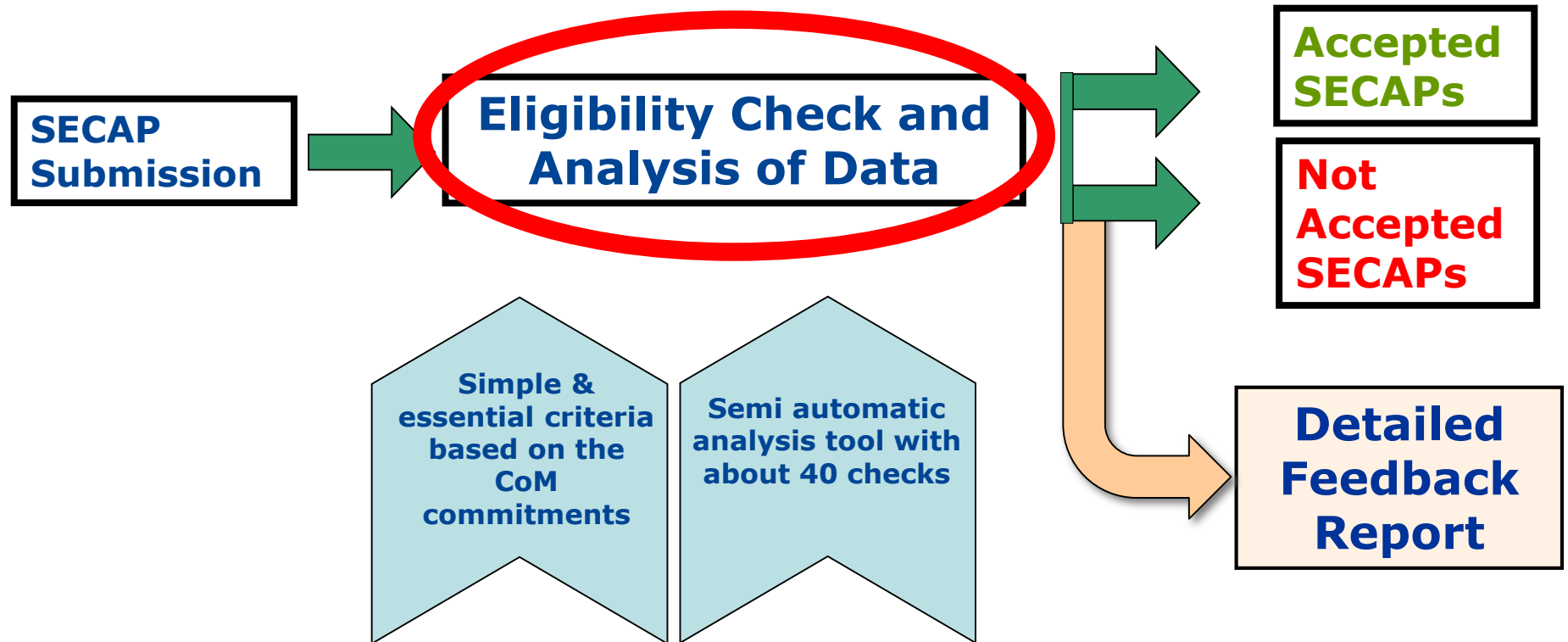


**The European Commission's  
science and knowledge service**

Joint Research Centre

# **SECAP validation and CoM monitoring requirements**

# The SE(A)CAP Evaluation Process





# The SE(A)CAP Evaluation Process



## Three steps

### 1. Eligibility check

To check that the SECAP is **consistent with the Covenant formal commitments** and principles (as defined in the commitment document)

### 2. Data coherence check

To check that **the data in the template are coherent and complete** (mainly based on a computer-assisted analysis)

### 3. Feedback report

To provide the Signatory with the **results of the analysis and concrete recommendations** for improvement

# The SE(A)CAP Evaluation Process

## Eligibility check

1. The SE(C)AP must be **approved by the municipal council** or equivalent body
2. The SE(C)AP must contain a clear reference to the **CO<sub>2</sub> reduction objective by 2020** ( $\geq 20\%$ ) and/or **by 2030** ( $\geq 40\%$ )
3. The **results of BEI** and of the climate **R&VA** must be provided
4. The SE(C)AP must include a **set of actions in the key sectors** of activity
5. The SE(C)AP **template** must be **correctly filled-in**
6. The **data** provided must be **coherent and complete**

## Data coherence check

SECAPs that do not comply with all the above criteria cannot be accepted

Sectors / Fields of action	
<b>Municipal &amp; public lighting</b>	✓
<b>Residential</b>	✓
<b>Tertiary</b>	✓
<b>Transport</b>	✓
<b>Local energy production</b>	<b>Optional</b>
<b>Local heat/cold production</b>	<b>Optional</b>
<b>Industries (excl. ETS sector)</b>	<b>Optional</b>
<b>Other sectors</b>	<b>See guidebook</b>

**4 KEY SECTORS**  
whose inclusion is  
highly recommended



**For mitigation, to be eligible a SE(C)AP must include:**

- ✓ **BEI**, covering at least 3 out of 4 key sectors
- ✓ **A list of concrete measures**, covering at least the municipal sector and one or more other key sectors

# The SE(A)CAP Evaluation Process



## FEEDBACK REPORT

*Aberdeen (UK)*

### Foreword

The present document is the feedback report from the Covenant of Mayors (CoM) Technical Helpdesk after having completed the analysis of your Sustainable Energy Action Plan (SEAP).

The analysis is essentially focusing on the compliance of the SEAP with the Covenant formal commitments and principles as well as on the evaluation of the completeness and consistency of the data inserted in the SEAP template. The latter is mainly based on a computer-assisted analysis performed on the data you inserted in the online SEAP template. The selection and definition of adequate actions aiming at achieving your emissions reduction objective are entirely left to your responsibility as they need to be tailor-made on your territorial circumstances.

The feedback report serves the purpose of informing the signatory on whether its SEAP fulfils the following criteria:

1. The SEAP must be approved by an official body (in principle the municipal council).
2. The SEAP must clearly specify what is your overall CO<sub>2</sub> reduction objective by 2020 (20% as a minimum).
3. The results of the Baseline Emission Inventory (BEI) must be provided and must cover the key sectors of activity.
4. The SEAP must include a set of actions in the key sectors of activity.
5. The SEAP template must be correctly filled-in.
6. The data inserted in the SEAP template must be coherent and complete.

## CASES

- Accepted
- Non accepted, mayor issues preventing accepting the plan, signatory asked to re-develop
- On hold, issues preventing the approval, but easily addressed. Precontact message

# The SE(A)CAP Evaluation Process

## For Adaptation

**Criteria of conformity**

**Criteria of completeness**

**Criteria of coherence**

**Criteria of quantification**

**Criteria of technical robustness**

## ANNEX I

### THE COVENANT OF MAYORS STEP-BY-STEP PROCESS & GUIDING PRINCIPLES

#### A COMMON ROADMAP FOR A SHARED VISION:

In order to meet their mitigation and adaptation targets, Covenant of Mayors Signatories commit to a series of steps:

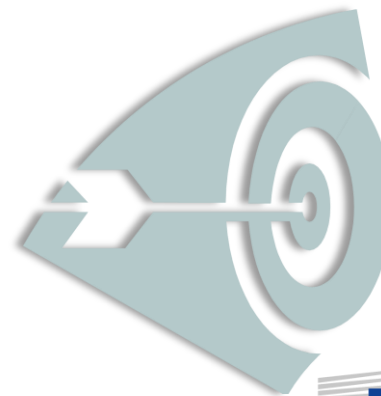
STEPS \ PILLARS	MITIGATION	ADAPTATION
1) Initiation and baseline review	Preparing a <b>Baseline Emission Inventory</b>	Preparing a <b>Climate Change Risk and Vulnerability Assessment</b>
2) Strategic target setting & planning	Submitting a <b>Sustainable Energy and Climate Action Plan (SECAP)</b> and mainstreaming mitigation and adaptation* considerations into relevant policies, strategies and plans_ <u>within two years following the municipal council decision</u>	
3) Implementation, monitoring and reporting	<b>Report progress</b> <u>every second year following the SECAP submission</u> in the initiative's platform	

*\* The adaptation strategy should be part of the SECAP and/or developed and mainstreamed in (a) separate document(s). Signatories can opt for the format of their choice – see the “adaptation pathway” paragraph hereafter.*

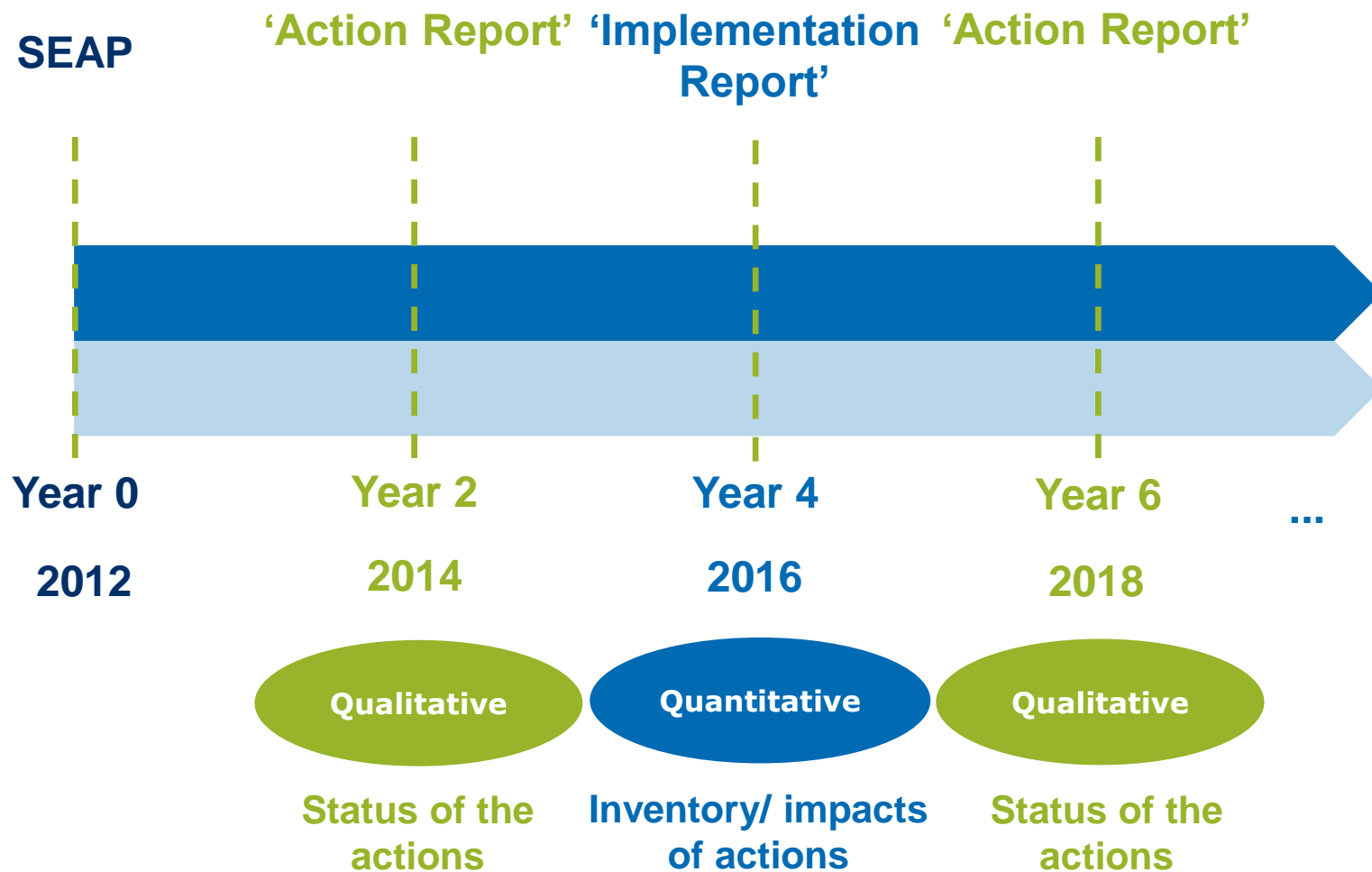
# Why is monitoring important?

- To monitor how actions defined in SECAPs are progressing and evaluate their effects towards the targets
- To identify the need of adjustments to the plan, e.g. corrective measures
- To take new opportunities not initially foreseen, e.g. changes to the national/international context

***Is the signatory on track to reach the target?***



# CoM monitoring requirements





# MONITORING EVALUATION

JRC is currently developing an automatized web based tool for the monitoring evaluation

- Only for the **quantitative monitoring** reports, Monitoring emission inventories(MEI)
- **Auto generated** when signatory introduces the MEI data
- The evaluation in this case **is not an approval**, but a collection of improvements suggestions

**The European Commission's  
science and knowledge service**

Joint Research Centre

# **Methodological adaptation**

# Methodological adaptation at global level

	EU-28	Eastern Partnership Cities	Southern Partnership Cities
<b>Target</b>	40% by 2030	30% by 2030	Beyond the NDCs
<b>Reduction target</b>  <i>as compared to BEI emissions</i>	Absolute terms [tCO <sub>2</sub> ]	Absolute terms [tCO <sub>2</sub> ]	Absolute terms [tCO <sub>2</sub> ]
	Relative terms [tCO <sub>2</sub> /capita]	Relative terms [tCO <sub>2</sub> /capita]	Relative terms [tCO <sub>2</sub> /capita]
<i>as compared to BAU emissions</i>	<b>Not allowed</b>	Absolute terms [tCO <sub>2</sub> ]	Absolute terms [tCO <sub>2</sub> ]
<b>Base year</b>	1990 recommended	A recent year representative of current situation	1990 recommended or if data is not available more recent year
<b>Key sectors</b>	CoM EU key sectors	As CoM EU + solid waste and waste water recommended	As CoM EU + solid waste and waste water recommended

## Methodological adaptation at global level

### Main Outputs:

- ✓ CoM South Mediterranean guidebook
- ✓ CoM East guidebook
- ✓ Methodological adaptation to 2030-  
New reporting platform
- ✓ Work on SSA ongoing (guidebook)
- ✓ Ongoing update of the EU guidebook
- ✓ ...

**The European Commission's  
science and knowledge service**

Joint Research Centre

**JRC role:  
Overall assessment of  
the initiative**

# JRC publication on CoM

## The twenty-second session of the Conference of the Parties: European Union Energy Day- Energy for Cities

*Marrakech, November 14<sup>th</sup> 2016*

JRC SCIENCE FOR POLICY REPORT

The Covenant of Mayors:  
In-depth Analysis of Sustainable  
Energy Actions Plans

Silvia Rivas, Giulia Melica, Albana Kona, Paolo  
Zancanella, Tiago Serrenho, Andreea Iancu,

JRC SCIENCE AND POLICY REPORTS

The Covenant of Mayors in Figures  
and Performance Indicators:  
6-year Assessment

Albana Kona, Giulia Melica, Silvia Rivas Calvete,  
Paolo Zancanella, Andreea Iancu, Irena  
Gabrielatiene, Yamina Sahab, Greet Janssens-  
Maenhout, Paolo Bertoldi

2015

JRC SCIENCE FOR POLICY REPORT

Covenant of Mayors:  
Greenhouse Gas Emissions  
Achievements and Projections

Albana Kona, Giulia Melica, Brigitte Koffi, Andreea Iancu,  
Paolo Zancanella, Silvia Rivas Calvete, Paolo Bertoldi,  
Greet Janssens-Maenhout, Fabio Monforti-Ferrario

2016

JRC SCIENCE FOR POLICY REPORT

Covenant of Mayors in figures:  
8-year assessment

Kona A., Melica G., Bertoldi P., Rivas  
Calvete S., Koffi B., Iancu A.,  
Zancanella P., Janssens-Maenhout G.,  
Dallemand J.F.

2017

The Covenant of  
Mayors in Figures  
5-Year  
Assessment

Alessandro K. Cerutti, Andreea Iancu, Greet Janssens-Maenhout,  
Giulia Melica, Federica Paina, Paolo Bertoldi

2013

Report EUR 20000

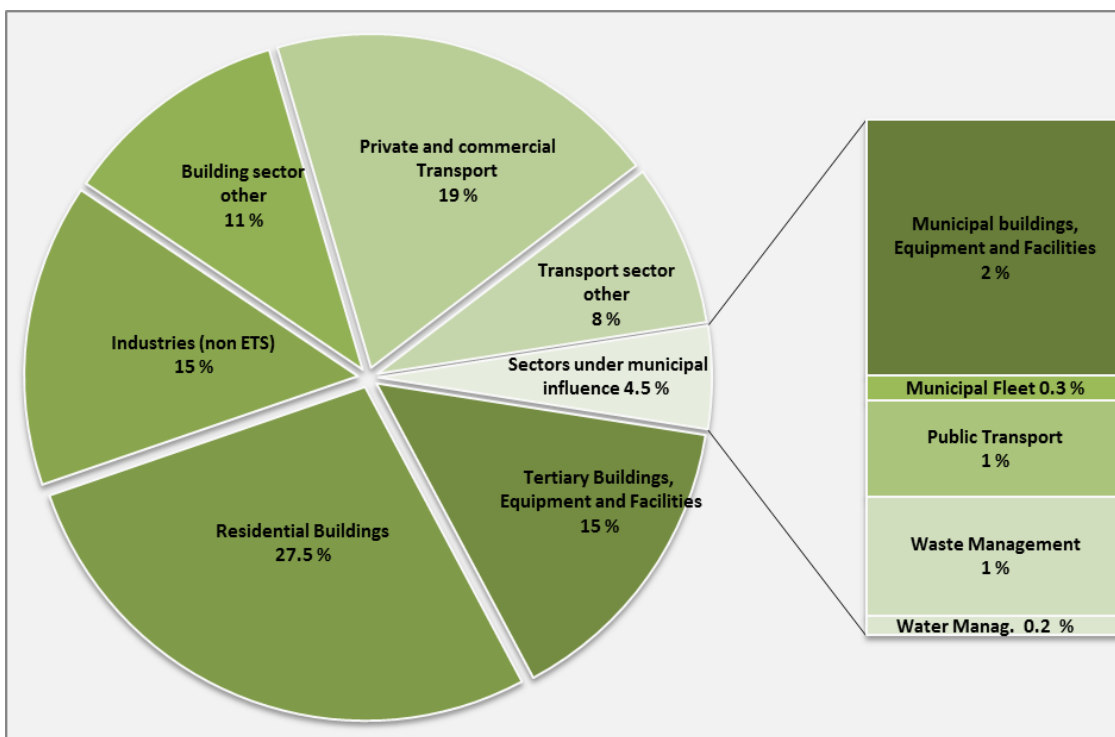
## Based on quantitative reports

Trends analysis on:

- ✓ Energy consumption
- ✓ Share of biofuels on total fuel consumption
- ✓ Share of local energy production on total energy consumption
- ✓ Emissions
- ✓ Achievements projections

## Priority areas for action EU CoM

The choice of sectors to tackle and of specific measures to implement is **entirely left to the responsibility** of the signatory, depending on:



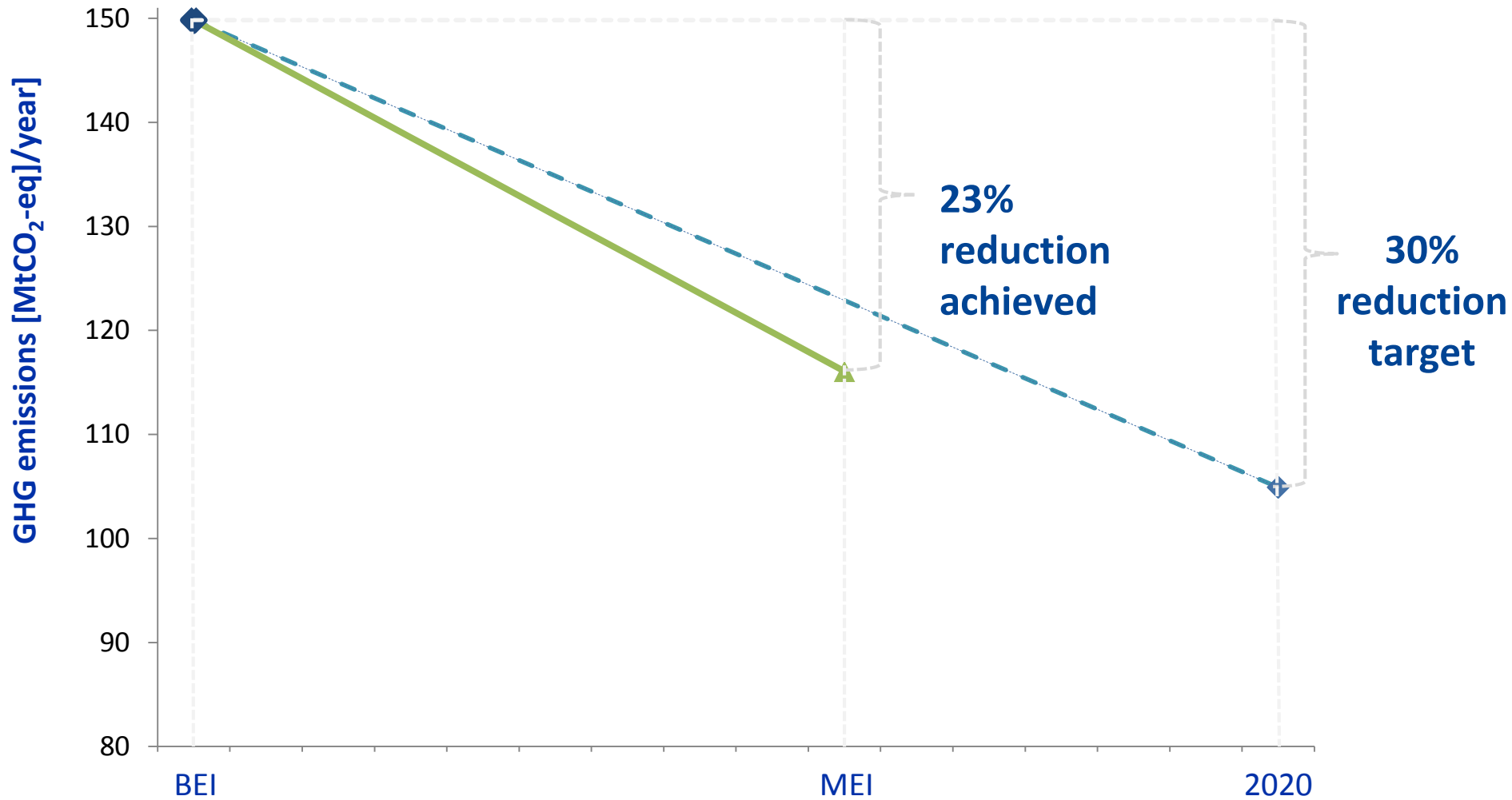
- **political mandate of the Mayor**
- **national framework regulations, grants, etc.**
- **size of the local authority availability of human & financial resources, expertise, etc.**

**Breakdown of GHG emissions in BEI**  
(951 Mt CO<sub>2</sub>-eq/year)



# MAIN FINDINGS ON 2016 ASSESSMENT

## Covenant achievements in 2014



— Linear interpolation based on data in BEI years and 2020 commitment

— Reduction monitored from BEI to MEI

## Policies

- Combination of effective urban energy policies and better coordination between national and local governments is crucial for the potential of the urban mitigation of climate change
- Climate mitigation and sustainable energy actions adopted at the local level are interconnected:
  - improving energy efficiency through building regulations
  - increasing the share of renewable energy
  - integrating district energy systems
  - a gradual transformation to more efficient and sustainable transportation

## GHG emissions decrease

- Overall emission reduction achieved 23 % driven by:
- The reduction of final energy consumptions of 18% between baseline and monitoring inventories;
- The increased share of renewables on total final energy consumption of 7 percentage points between baseline and monitoring inventories.

# Stay in touch

**Silvia.rivas-calvete@ec.europa.eu**



**EU Science Hub: *ec.europa.eu/jrc***



**Twitter: *@EU\_ScienceHub***



**Facebook: *EU Science Hub - Joint Research Centre***



**LinkedIn: *Joint Research Centre***



**YouTube: *EU Science Hub***