

# Stewart Wilson – CEO

Tighean Innse Gall  
Outer Hebrides, Scotland, UK









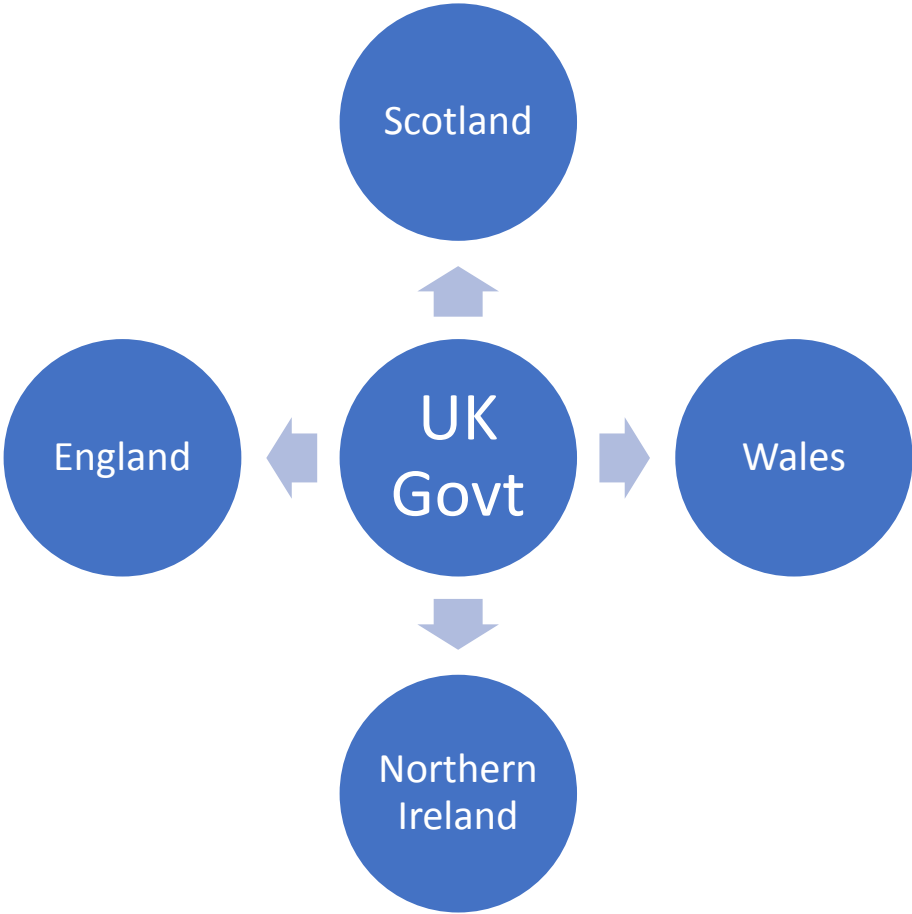
# **Building codes to local renovation supply chains**

## **From national policies to your house - effective links in the chain to an energy efficient future**

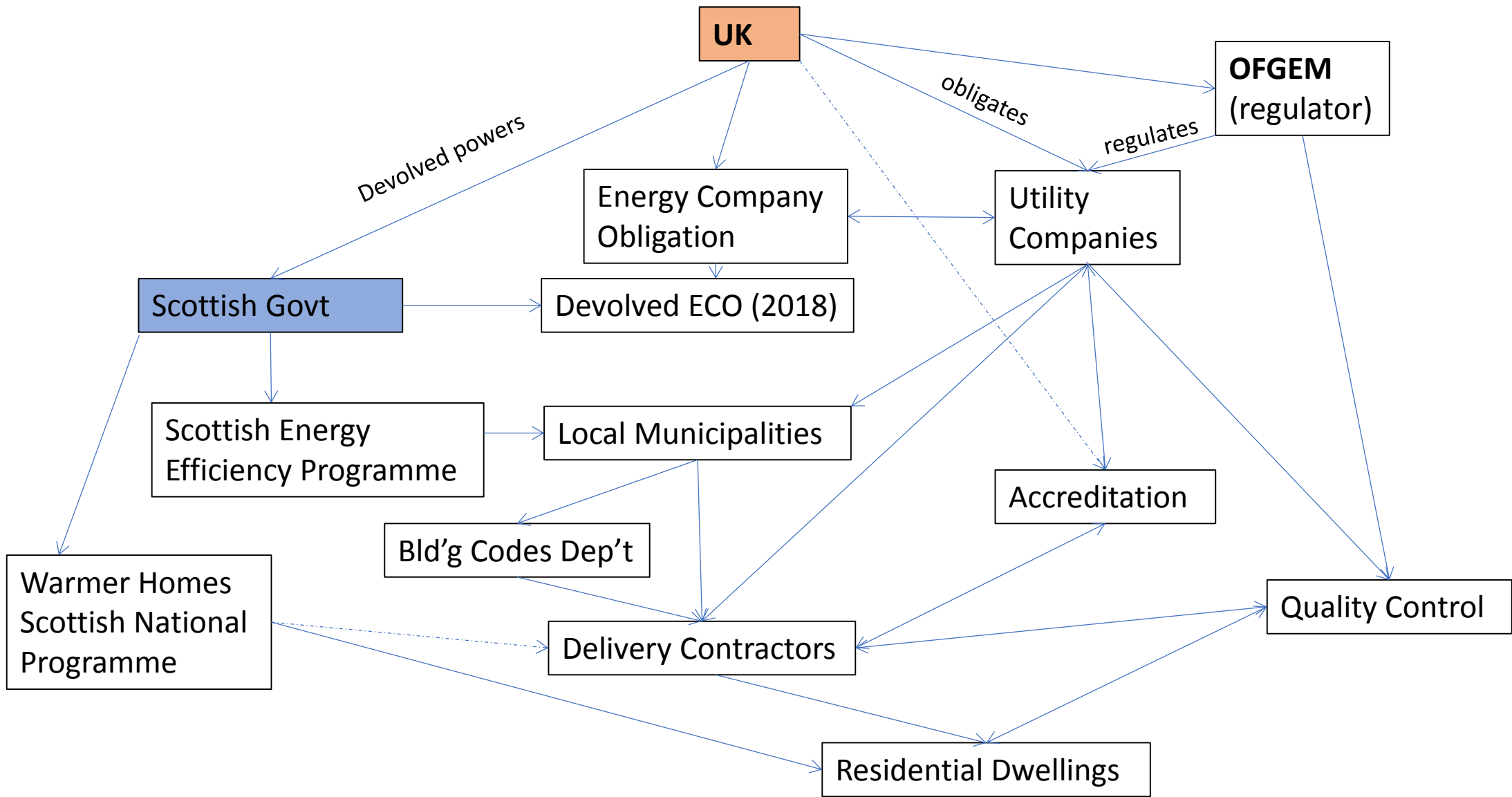




# UK Energy Policy Context- Central & Devolved









## Potential Policy Pitfalls



### One size doesn't fit all

- the most in need of are often at edge of policy
- they are often the hardest to deliver for
- policy makers often prioritise Urban over Rural
  - cities before villages or Islands
- difficult solutions are often shunned
- House types can vary widely



## The 3 C's



**UK vs Devolved powers – *conflicts of priority***

**Devolved nations programmes – *conflicts of delivery***

**Programme Marketing – *conflicts of information***



# KEEP IT LOCAL FOR BETTER SERVICES

## The 3 L's

### Local Knowledge

Local understanding of local codes, geography, house types, climate, need, etc

### Local Intelligence

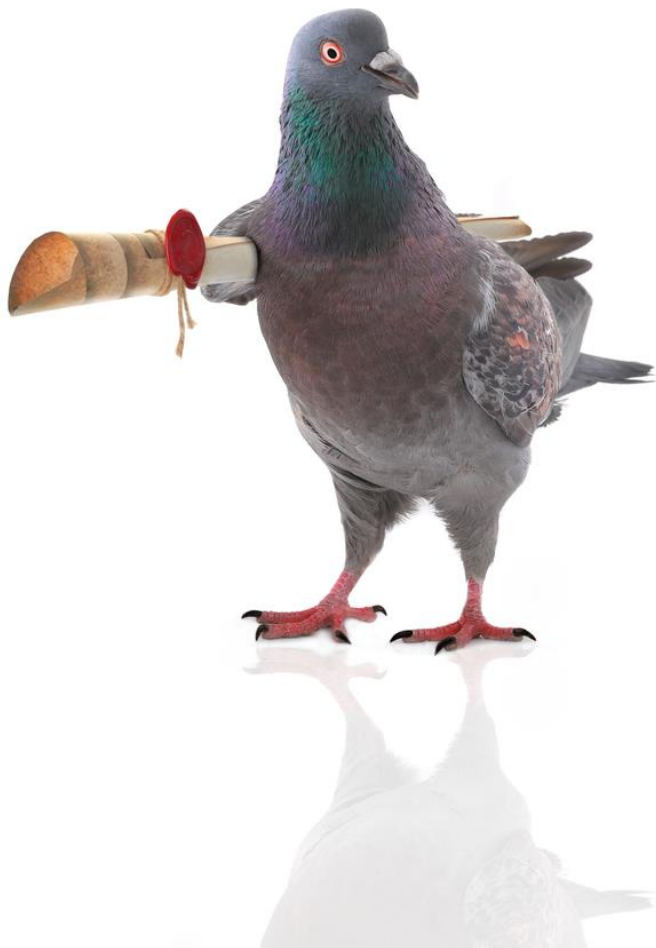
Local supply chain, reliable resource management, cultural & language barriers, delivery costs, etc

### Local Trust

Local accountability, sensibility to local preferences, local recourse for aftercare, building on proven track record, etc



# **Sending your message to Policy Headquarters**



## **Local Representation**

Invest in obtaining a seat at the policy tables relevant to you, time, effort, (perhaps wider policy tables)

## **Local Voice**

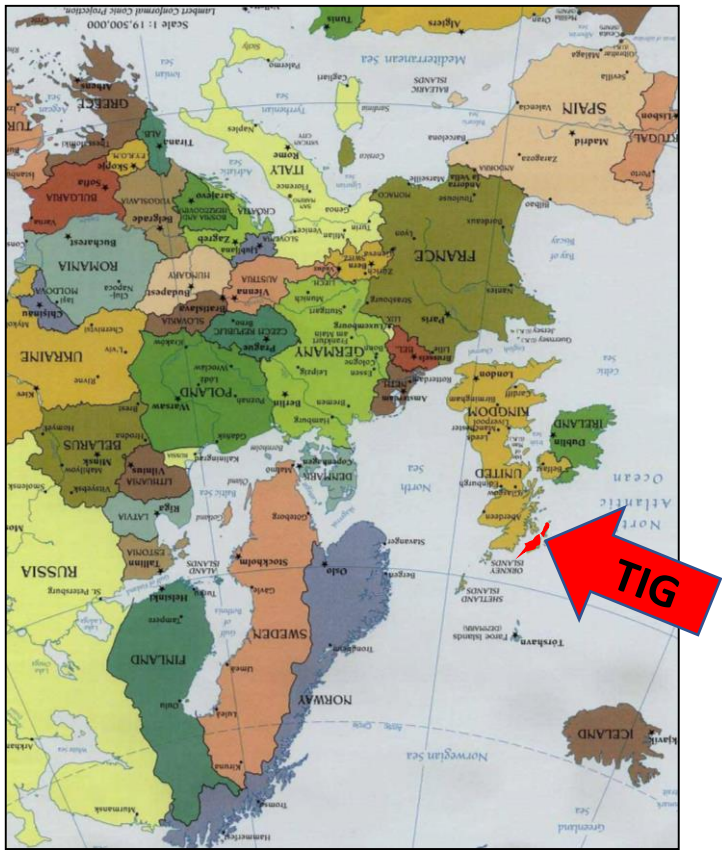
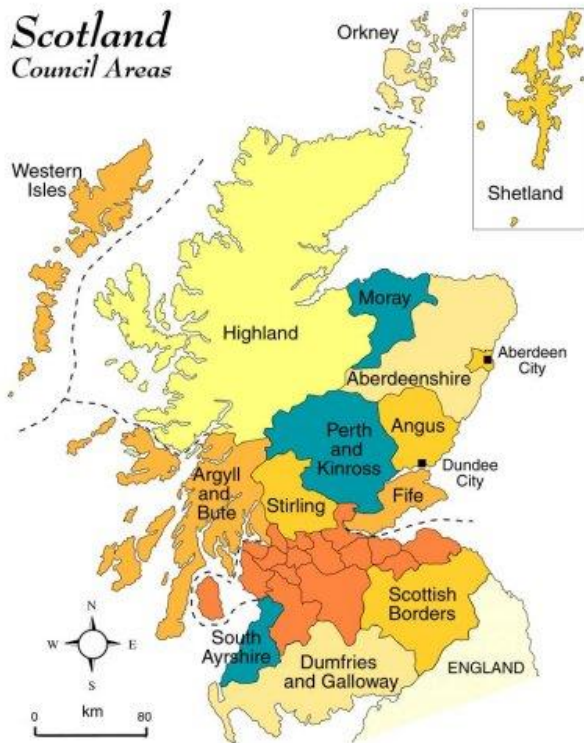
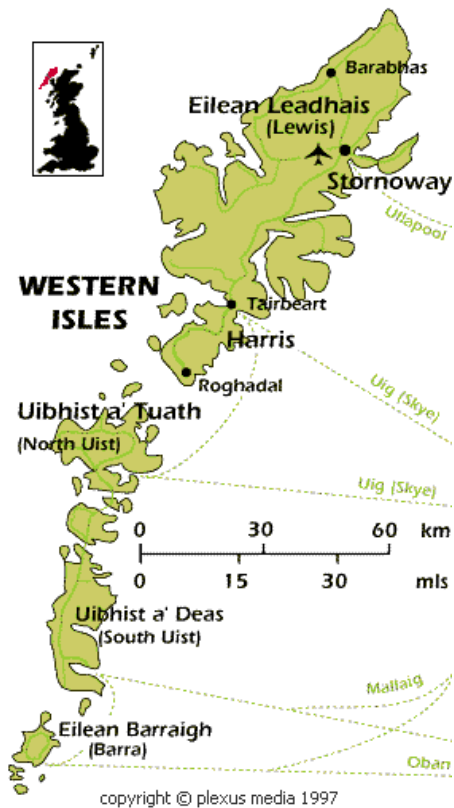
Invest in and form local partnerships and raise issues with policy makers

## **Local Leading**

Don't just complain- Do & do it well, take the initiative, demonstrate,



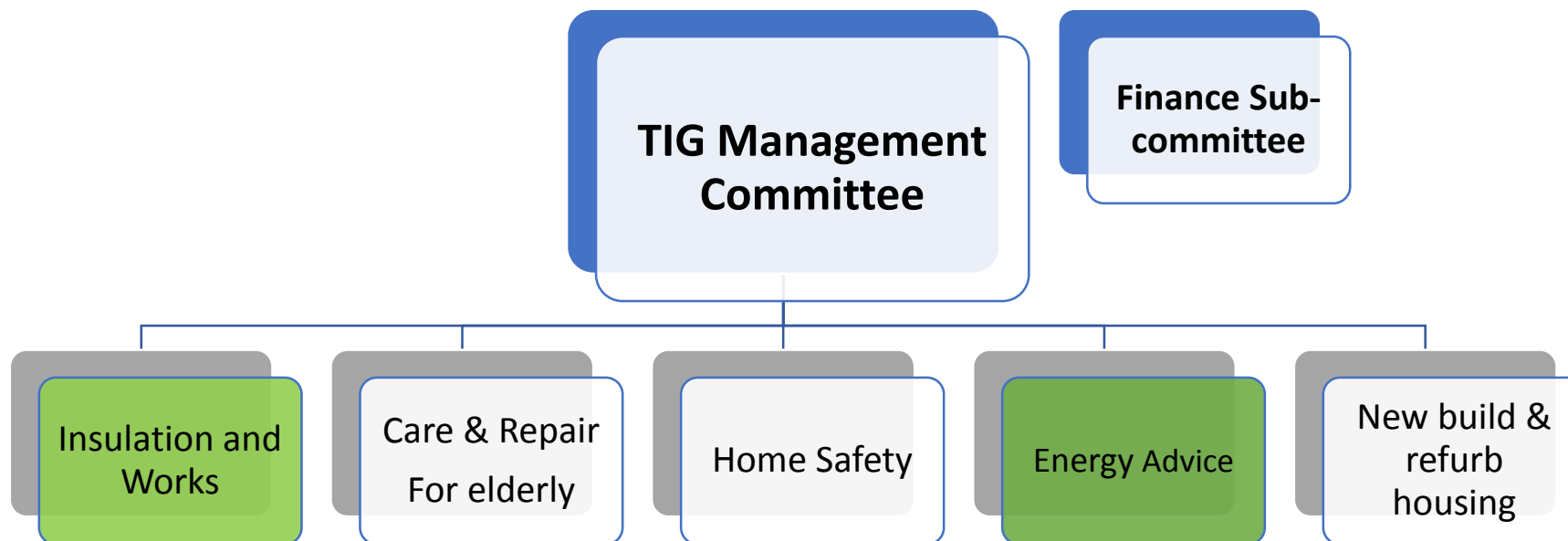
# Thinking Differently





# Tighean Innse Gall

## A 'not for profit' organisation





# Tighean Innse Gall

## *Mission statement*

**“We will support people to rent, buy and live in comfortable, affordable homes; promote independent living and assist business and communities to be more sustainable.”**

## *Our Vision*

**“Focussing on the fuel poor and vulnerable we will provide a high quality service to all clients. We want to see locally developed energy, housing and business solutions relevant and responsive to the needs of our communities.”**

## *Our Goal*

**Local, Trusted and for the Community.**



# Tighean Innse Gall- A Trusted Brand







## Typical Croft House – Habost, Ness

- Stone wall construction
- 2 up 2 down with filled cavity wall extension
- Solid fuel (peat/coal) & electric storage heating
- 100 mm loft insulation with hot water immersion
- All easy access measures completed
- Annual energy bill £2300
- Circa 18 Tonnes CO<sub>2</sub>e emissions

### Recommended measures: annual

- Room in Roof:
- External Wall Insulation:
- Virgin loft to rear extension
- Totals

### £ savings

£600  
£260  
£96  
£956

### lifetime CO<sub>2</sub>e (tonnes)

178t  
130t  
22t  
330t



## WRAP YOU & YOUR HOME UP FOR WINTER WITH FREE ROOM IN ROOF, EXTERNAL WALL & UNDER FLOOR INSULATION FROM TAIGH BLATH.

✕ Conditions apply see overleaf.

### ALSO:

1. Do you live in a stone or concrete built house?
2. Do you have electric or solid fuel heating?
3. Do you have rooms upstairs?

If you have answered YES to any of these questions Taigh Blath will survey your house to see if you are eligible.

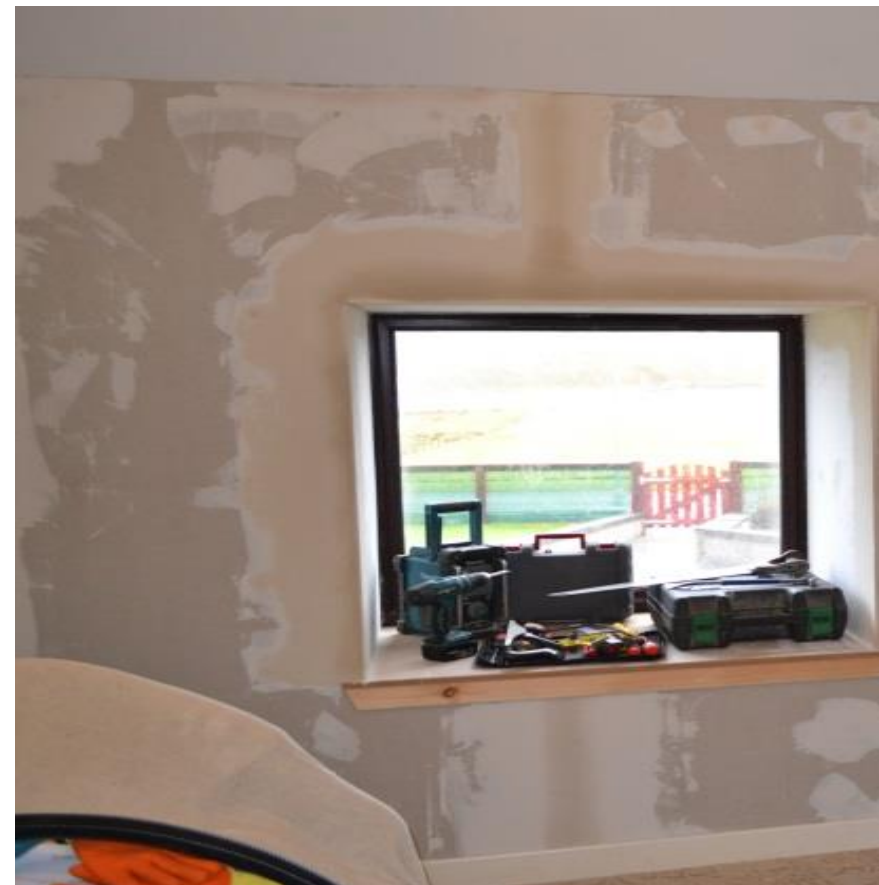
\*External Wall Insulation currently not available to homes with oil central heating.







SAP EPC: **34** Improved SAP: **52**  
 Client Contribution: **£997.50**  
 Completed: **December 2015**  
 Contractor: **NMK**  
 Carbon Saved (t/year): **2.928**  
 Annual Fuel Bill Saving: **£350.00**







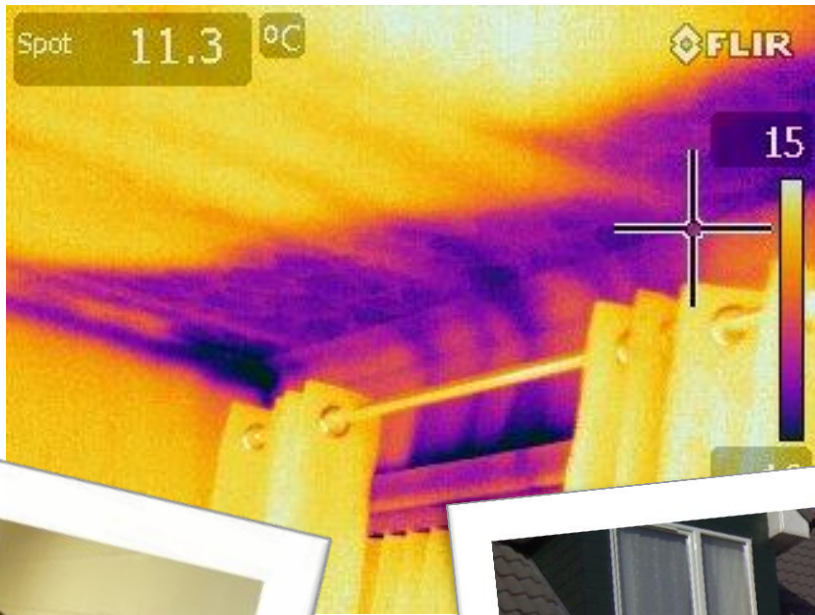










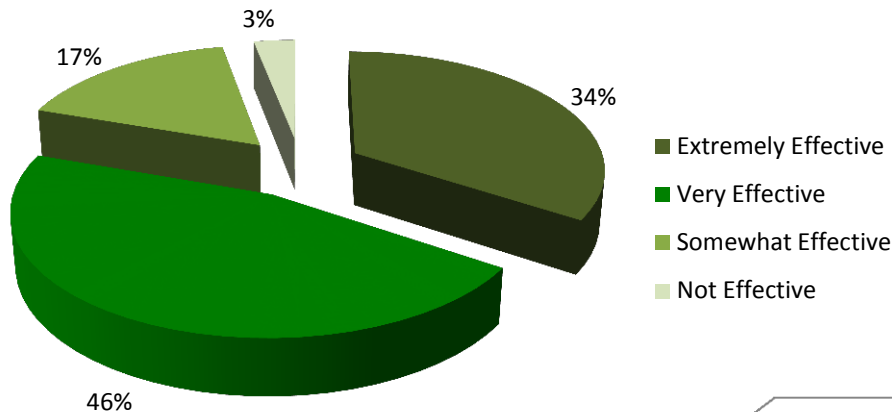




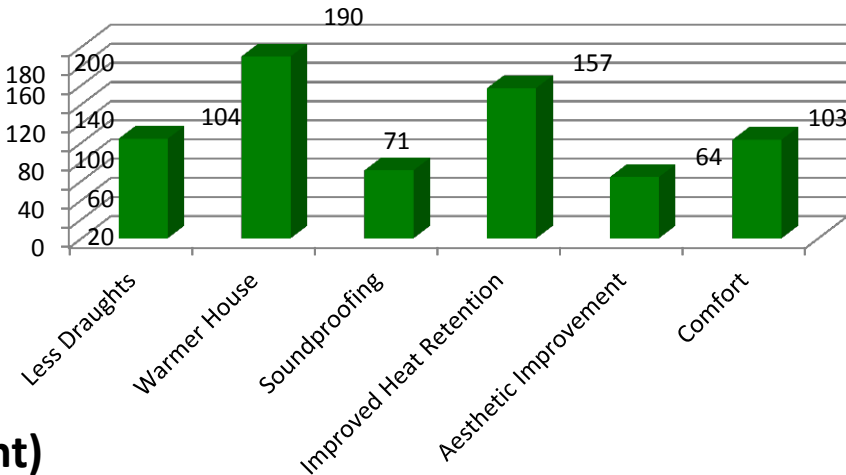
# Tighean Innse Gall

## Customer & Community centred

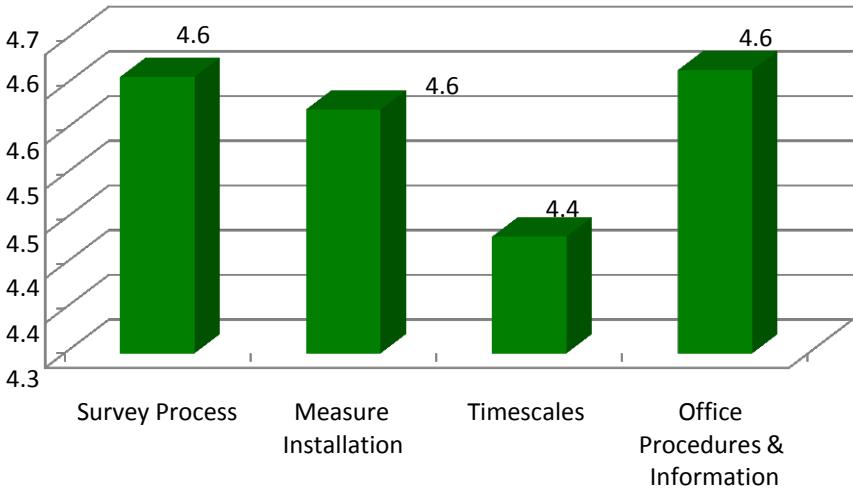
Measure Effectiveness



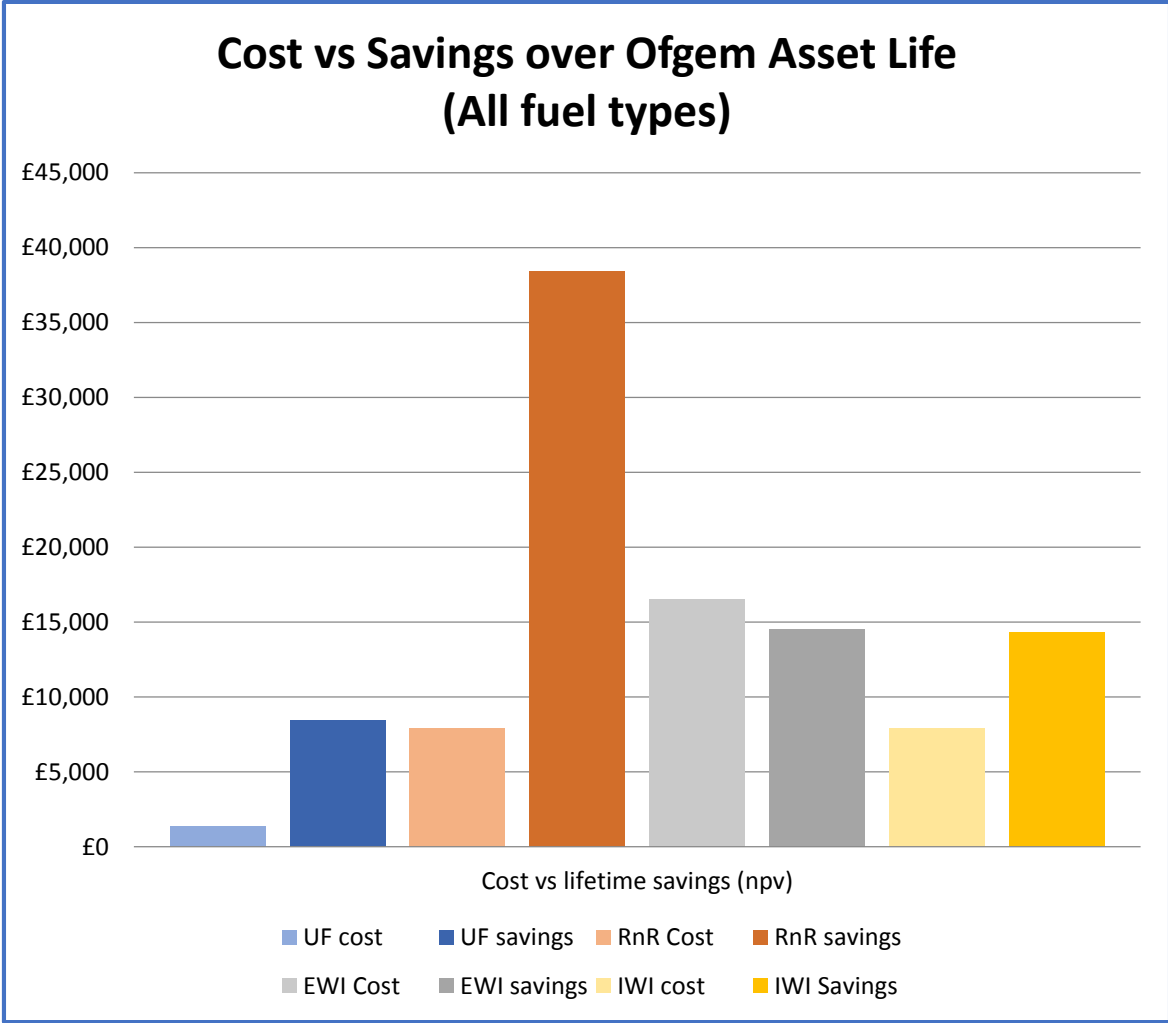
Noticeable Benefits



Customer Scores (5=excellent)

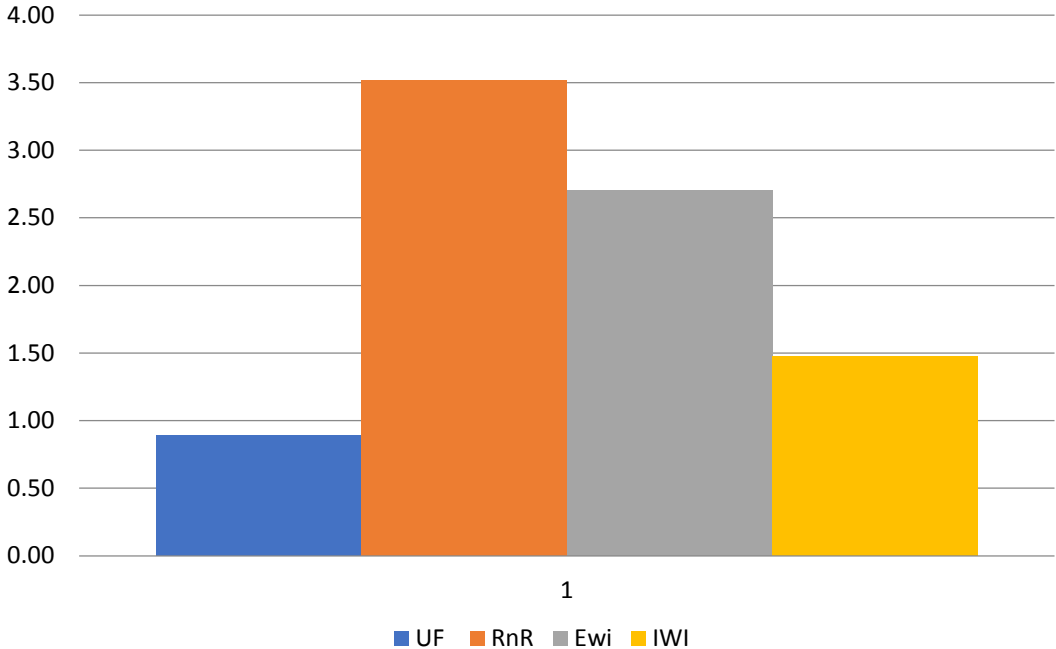




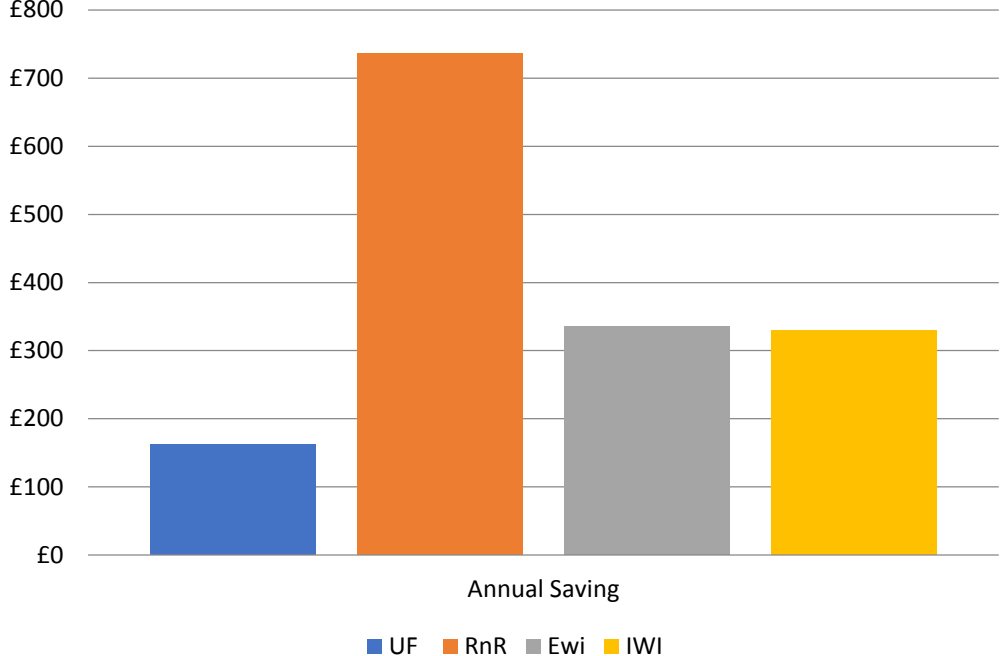




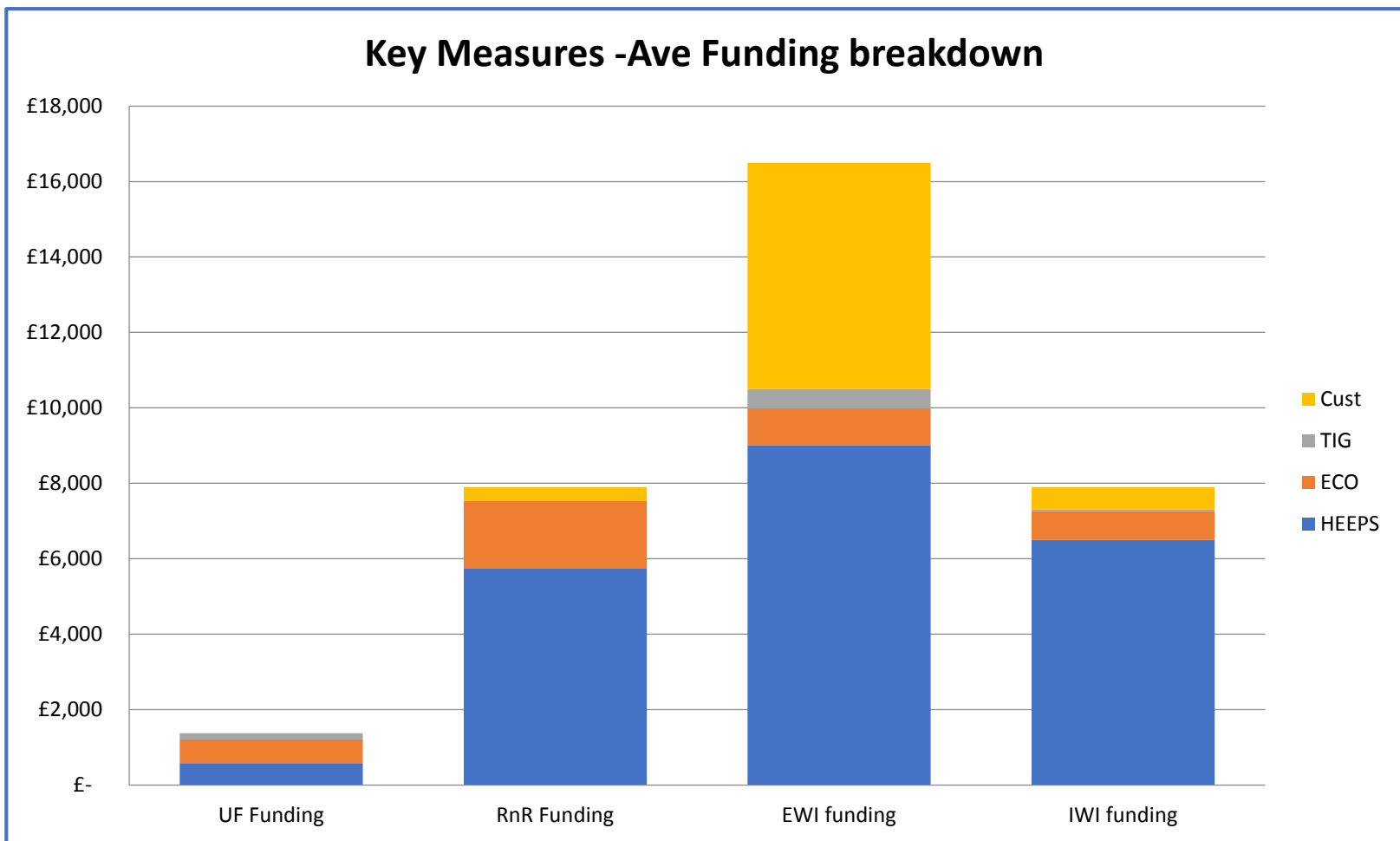
Annual Carbon Savings (Tonnes)



Annual Fuel Cost Savings









**Table 6: Geographical spread of referrals and installations for EAP Stage 4**

Note that the referrals are those made in 2012-13 and the installations are those completed in 2012-13, so care must be applied in deducing anything about attrition from this data.

Area	Referrals	Installations	Households in area	Percentage receiving an installation
<b>Highland and Island ESSac</b>	<b>2419</b>	<b>1905</b>	<b>176015</b>	<b>1.08%</b>
Argyll and Bute	518	326	41775	0.78%
Highland	1485	1122	102736	1.09%
<b>Western Isles</b>	<b>264</b>	<b>292</b>	<b>12208</b>	<b>2.39%</b>
Shetland Islands	45	69	9928	0.70%
Orkney Isles	107	96	9368	1.02%
<b>North East ESSac</b>	<b>3884</b>	<b>1872</b>	<b>434404</b>	<b>0.43%</b>
<b>South East ESSac</b>	<b>4082</b>	<b>2205</b>	<b>588329</b>	<b>0.37%</b>
<b>South West ESSac</b>	<b>2687</b>	<b>1368</b>	<b>236368</b>	<b>0.58%</b>
<b>Strathclyde and Central ESSac</b>	<b>7136</b>	<b>3930</b>	<b>932919</b>	<b>0.42%</b>
<b>TOTAL SCOTLAND</b>	<b>20208</b>	<b>11280</b>	<b>2368035</b>	<b>0.48%</b>



# Latha math agus tapadh leibh