



European  
Commission

## Joint Research Centre

the European Commission's in-house science service



[ec.europa.eu/jrc](http://ec.europa.eu/jrc)

# SE(C)AP validation and CoM monitoring requirements in the EU Covenant

## Technical training on the Covenant of Mayors

JRC training for IUC contractors  
and FPI Programme managers

**Brussels**  
**13-14 February 2017**

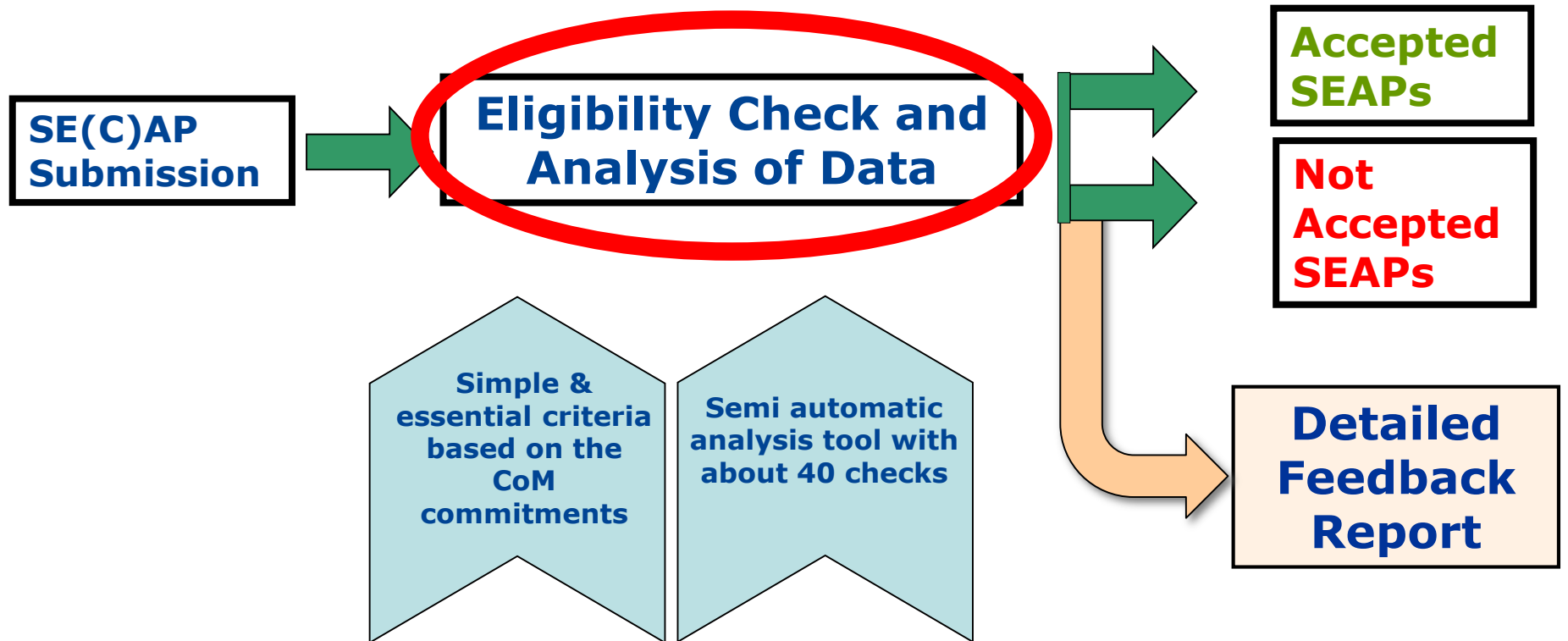


**Covenant of Mayors**  
for Climate & Energy

Joint  
Research  
Centre

# 1. SE(C)AP validation

# The SE(C)AP Evaluation Process



## 3 steps

### 1. Eligibility check

To check that the SE(C)AP is consistent with the Covenant formal commitments and principles (as defined in the commitment document)

### 2. Data coherence check

To check that the data in the template are coherent and complete (mainly based on a computer-assisted analysis)

### 3. Feedback report

To provide the Signatory with the results of the analysis and concrete recommendations for improvement

# SE(C)AP analysis criteria



## Eligibility check

1. The SE(C)AP must be **approved by the municipal council** or equivalent body
2. The SE(C)AP must contain a clear reference to the **CO<sub>2</sub> reduction objective by 2020** ( $\geq 20\%$ ) and/or **by 2030** ( $\geq 40\%$ )
3. The **results of BEI** and of the climate **R&VA** must be provided
4. The SE(C)AP must include a **set of actions in the key sectors** of activity
5. The SE(C)AP **template** must be **correctly filled-in**
6. The **data** provided must be **coherent and complete**

## Data coherence check

The SE(C)AP template must reflect the content of the document officially approved by the Council

SECAPs that do not comply with all the above criteria cannot be accepted

# More on criteria 3 and 4



Sectors / Fields of action	
<b>Municipal &amp; public lighting</b>	✓
<b>Residential</b>	✓
<b>Tertiary</b>	✓
<b>Transport</b>	✓
<b>Local energy production</b>	<b>Optional</b>
<b>Local heat/cold production</b>	<b>Optional</b>
<b>Industries (excl. ETS sector)</b>	<b>Optional</b>
<b>Other sectors</b>	<b>See guidebook</b>

**4 KEY SECTORS**  
whose inclusion is  
highly recommended



**For mitigation, to be eligible a SE(C)AP must include:**

- ✓ **BEI**, covering at least 3 out of 4 key sectors
- ✓ **A list of concrete measures**, covering at least the municipal sector and one or more other key sectors



## 2. The CoM Monitoring requirements

## ANNEX I

### THE COVENANT OF MAYORS STEP-BY-STEP PROCESS & GUIDING PRINCIPLES

#### A COMMON ROADMAP FOR A SHARED VISION:

In order to meet their mitigation and adaptation targets, Covenant of Mayors Signatories commit to a series of steps:

STEPS \ PILLARS	MITIGATION	ADAPTATION
1) Initiation and baseline review	Preparing a <b>Baseline Emission Inventory</b>	Preparing a <b>Climate Change Risk and Vulnerability Assessment</b>
2) Strategic target setting & planning	Submitting a <b>Sustainable Energy and Climate Action Plan (SECAP)</b> and mainstreaming mitigation and adaptation* considerations into relevant policies, strategies and plans_ <u>within two years following the municipal council decision</u>	
3) Implementation, monitoring and reporting	<b>Report progress</b> <u>every second year following the SECAP submission</u> in the initiative's platform	

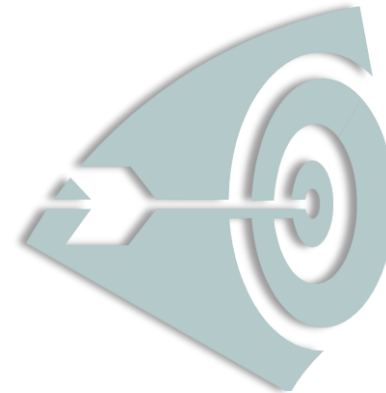
\* The adaptation strategy should be part of the SECAP and/or developed and mainstreamed in (a) separate document(s). Signatories can opt for the format of their choice – see the “adaptation pathway” paragraph hereafter.



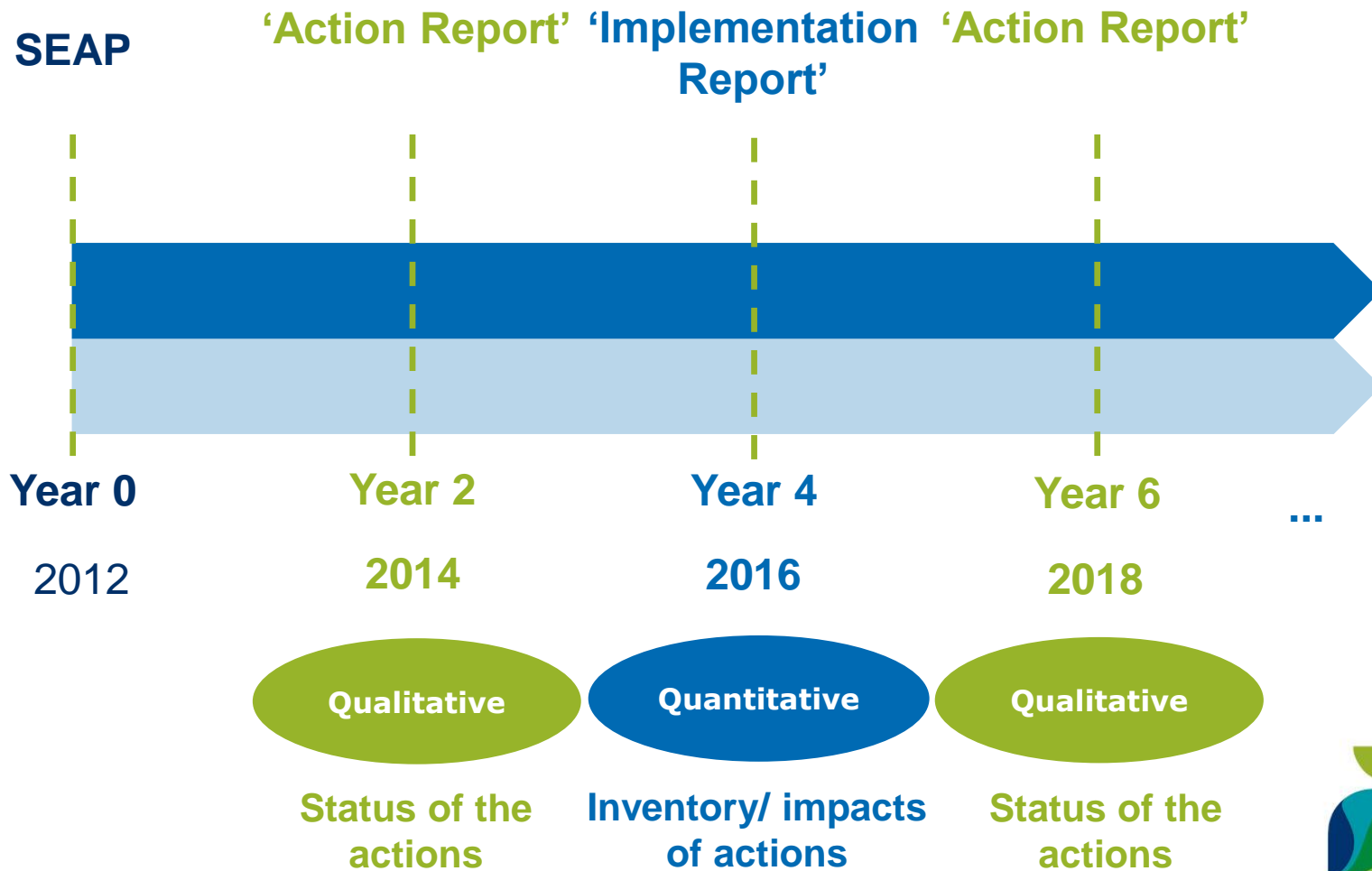
## Why is monitoring important?

- To monitor how actions defined in SE(C)APs are progressing and evaluate their effects towards the targets
- To identify the need of adjustments to the plan, e.g. corrective measures
- To take new opportunities not initially foreseen, e.g. changes to the national/international context

***Is the signatory on track to reach the target?***



# The CoM monitoring requirements



# How to report to the Covenant?



[Home](#) [My Action Plan](#) [My Progress](#) [My Benchmarks](#) [My Energy Days](#) [My Support](#) [My Account](#)

[Monitoring templates](#)  
[Get started](#)  
[Fill in monitoring templates](#)  
[Upload progress report](#)  
[Check and submit](#)

## Reporting Corner



### My Action Plan

You have developed your action plan? Congrats! Submit it here by filling in the template in English and uploading the document.



### My Progress

Already implementing your action plan? Here is the place to report on the progress made, every two years after submitting your action plan.



# What is monitored under the CoM



## Based on quantitative reports

It will be possible to analyse trends in:

- **Energy consumption**
- **Share of biofuels on total fuel consumption**
- **Share of local energy production on total energy consumption**
- **Emissions**
- **Etc.**



In the context of the Covenant, the main indicators are those linked to **energy consumption or level of emissions per unit of measure**, e.g.:

- Per capita energy consumption, by fuel and mode [MWh/capita]
- Carbon intensity of transport [t CO<sub>2</sub>/pkm] or [t CO<sub>2</sub>/Vkm]

Other suggested indicators:

- Public transport ridership [pkm/capita]
- Car passenger traffic [pkm/capita]
- Number of vehicles passing fixed point per year/month
- % of population living within 400 m of a bus service
- ...

## Examples [1]

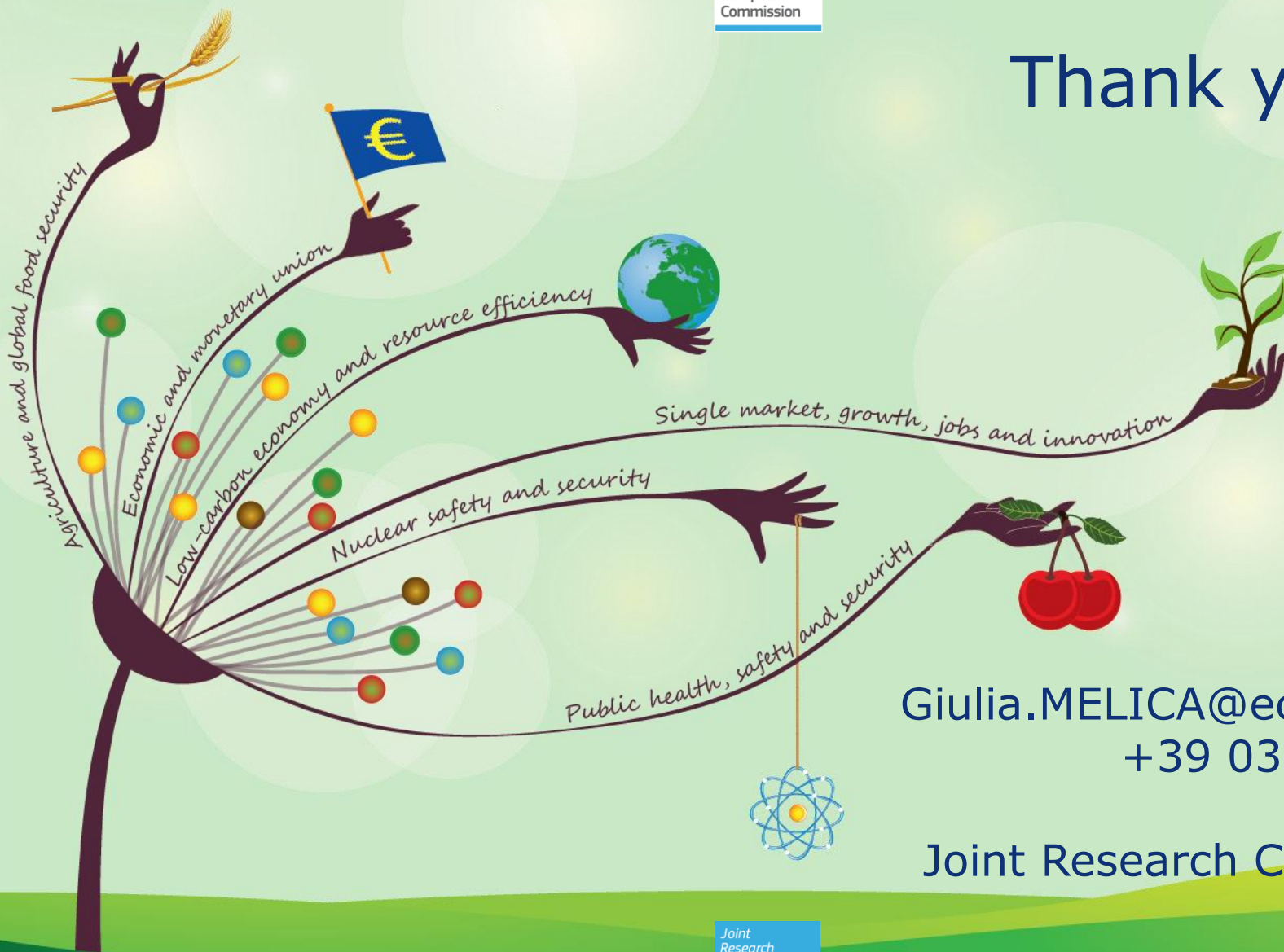
### Municipal - Residential - Tertiary Buildings

Building envelope	Number/surface area of buildings insulated [-/m2]
Energy efficiency in space heating and hot water	Number of boilers replaced [-]
Energy efficient lighting systems	Number of lamps replaced [-]
Energy efficient electrical appliances	Number of electrical appliances replaced [-]
Renewable energy for space heating and hot water	Surface area of solar thermal panels installed [m2]
Integrated action	Number/surface area of buildings retrofitted [-/m2]
ICT	Number of buildings with smart meters installed [-] / Number of new buildings with domotic systems [-]
Behavioural changes	Number of participants in awareness raising campaigns [-] / Number of CFLs distributed [-]

## Examples [2]

Municipal - Public - Private Transport	
Cleaner/efficient municipal vehicles	Number of vehicles replaced [-]
Municipal fleet - efficient driving behaviour	Example: no. of courses given on total planned (%)
Cleaner/efficient public transport	Number of new buses purchased [-]
Public transport infrastructure, routes and frequency	Network extension (km) / Number of services per day [-]
Electric vehicles infrastructure	Number of charging points [-]
Car sharing	Number of car share vehicles and locations [-]
Walking & cycling	Number of bicycle parking spaces [-]
ICT	Number of roads with Variable Speed Limits (VSB) introduced [-] / Number of teleworking schemes in place [-]
Efficient driving behaviour	Example: no. of courses/campaigns realised on total planned (%)

# Thank you!



Giulia.MELICA@ec.europa.eu  
+39 0332 78 3587

Joint Research Centre (JRC)