

# WORKSHOP: Technical training on how to set Targets for the Global Covenant

**The European Commission's  
science and knowledge service**  
Joint Research Centre



# The European Commission's science and knowledge service

Joint Research Centre

## The CoM approach: climate and energy planning at local level. Key principles

Silvia Rivas Calvete

Godoy Cruz , Argentina  
26 September 2017



# Context

- Urban energy consumption generates about **three quarters** of global carbon emissions (*IPCC, 2014*)
- **60%** of global population lives in urban areas (ONU, 2016)
- Cities are part of the problem and part of the solution
- Cities and Regions: a huge potential for a **sustainable energy use**, with a **positive impact on local economies**
- Need of a new model of **multi-level governance** for the implementation of climate policies

# The Covenant of Mayors (CoM)

Voluntary initiative launched in 2008 by the European Commission to support local authorities in the sustainable energy development and the fight against climate change

Mayors commit to go beyond EU energy and climate objectives

at least 20% CO<sub>2</sub> reduction  
in their respective territories by 2020

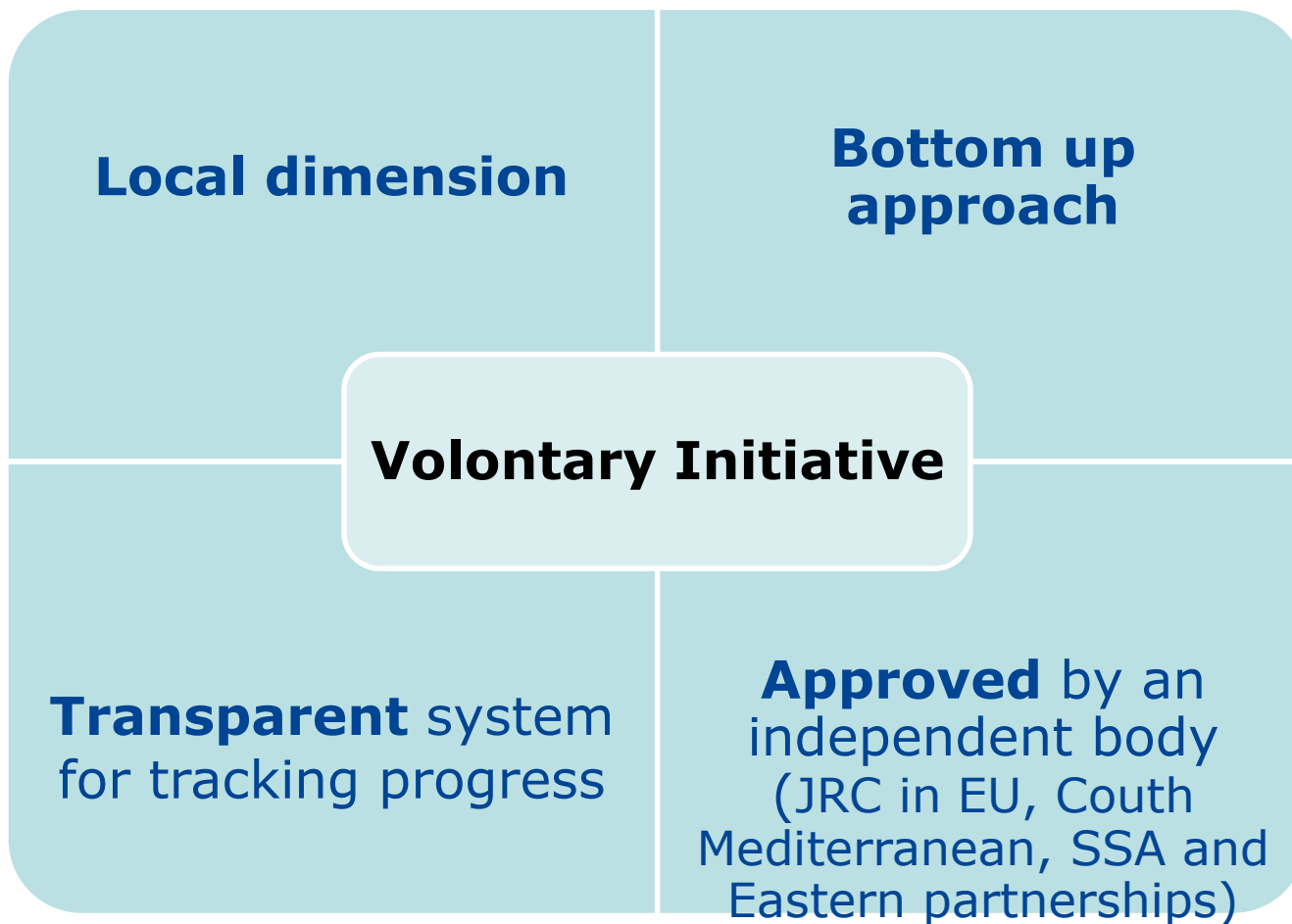
**ACCOUNTABILITY** of local authorities, which take the lead in the fight against climate change

- Define a Baseline Emission Inventory (BEI)
- Prepare a Sustainable Energy Action Plan (SEAP)
- Implement their Action Plan and report periodically on progress



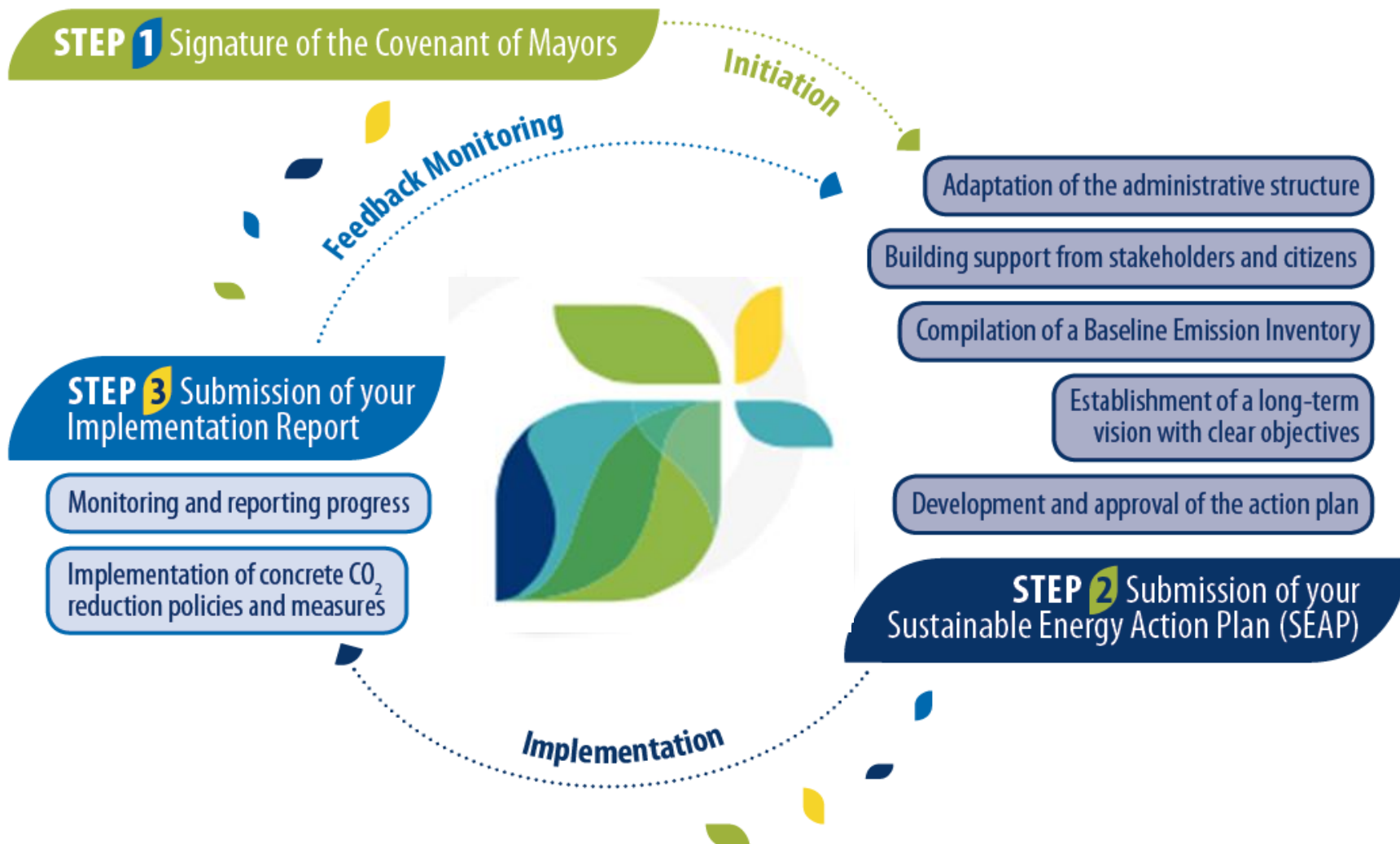
# Peculiarities of Covenant of Mayors

## Flexible and adapted

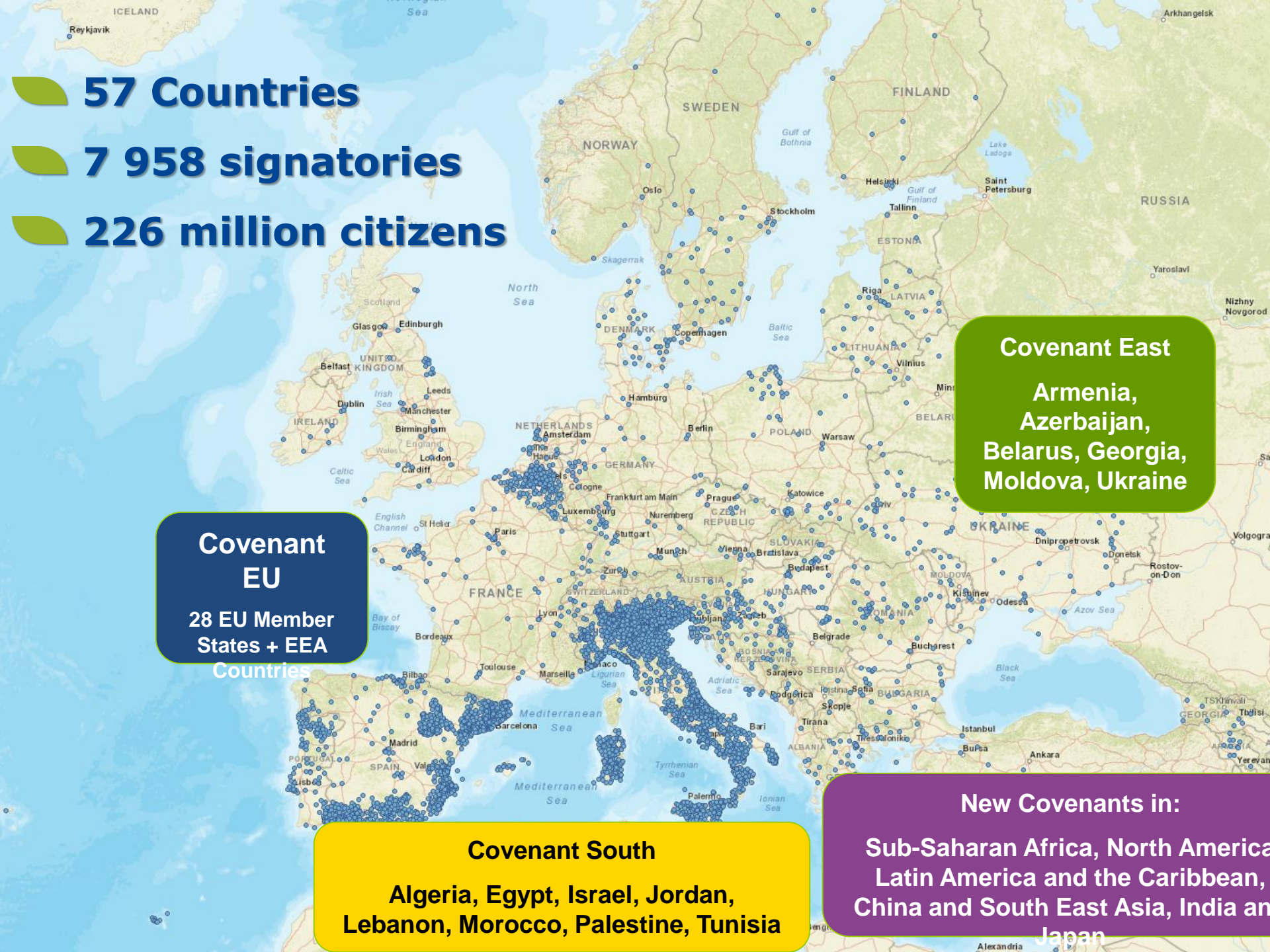


## Credibility

# The SEAP process: a holistic approach







**57 Countries**



**7 958 signatories**



**226 million citizens**

**Covenant  
EU**  
28 EU Member  
States + EEA  
Countries

**Covenant East**  
Armenia,  
Azerbaijan,  
Belarus, Georgia,  
Moldova, Ukraine

**Covenant South**  
Algeria, Egypt, Israel, Jordan,  
Lebanon, Morocco, Palestine, Tunisia

**New Covenants in:**  
Sub-Saharan Africa, North America  
Latin America and the Caribbean,  
China and South East Asia, India and  
Japan

# Towards Global Covenant

Priority action  
in the EU  
Action Plan for  
Energy  
Efficiency

Launch of the  
Covenant of  
Mayors  
initiative

Launch of  
Mayors Adapt  
on adaptation  
to climate  
change

New Integrated  
Covenant of  
Mayors for  
Climate and  
Energy

Launch of the  
Global Covenant  
of Mayors  
GCoM

GLOBAL COVENANT  
of MAYORS for  
CLIMATE & ENERGY

Covenant of Mayors  
for Climate & Energy



COMPACT  
of MAYORS

2006

2008

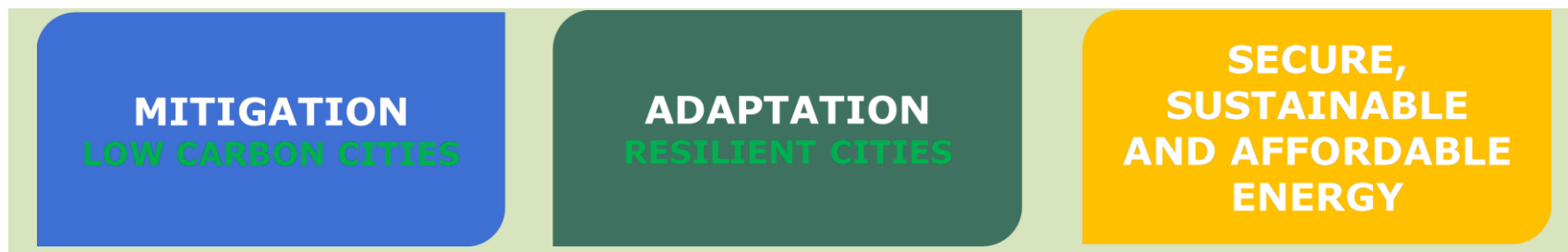
2014

2015

2017



# CoM for Climate and Energy: Three pillars



- **At least 40 % CO<sub>2</sub> reduction in their respective territories by 2030**
- **Increased resilience to the impacts of climate change**
- **Increased cooperation with fellow local and regional authorities within the EU and beyond to improve access to secure, sustainable and affordable energy**

# The 10 key principles

**The principles are linked to the commitments taken by Covenant signatories and constitute key ingredients of success. They are described in the Guidebook "How to develop a SEAP", Part I, which is currently being updated.**



## **10 CoM key principles**

**Approval by the municipal council**

**Commitment for a reduction of CO<sub>2</sub>**

**CO<sub>2</sub> baseline emission inventory (BEI) and risks and vulnerabilities assessment (RVA)**

**Comprehensive measures covering key sectors**

**Strategies and actions to 2020/2030 or (and possibly beyond)**

**Mobilization of all municipal departments involved**

**Engagement of all relevant stakeholders and empowerment of citizens**

**Financing**

**Monitoring and reporting**

**SECAP submission**

## ***I. Approval by the municipal council (or equivalent decision-making body)***

*Strong political support is essential to ensure the success of the process, from SE(C)AP design to implementation and monitoring*



## ***II. Commitment for a reduction of CO<sub>2</sub> emissions by at least 20% by 2020 and/or 40% by 2030***

*The SE(C)AP must specify the CO<sub>2</sub> reduction objective of the local authority.*

*Ideally also:*

- *A longer-term target (e.g. to 2050)*
- *Targets on energy savings or on local energy production from renewables should be specified*
- *Sector-specific targets*

## Example of CoM Cities' objectives

### **Riga:**

**44% emission reduction  
by 2020**

### **Ghent:**

**20% emission reduction  
by 2020  
Carbon neutral by 2050**

### **Amsterdam:**

**climate-neutral municipal  
organisation in 2015  
40% emission reduction by  
2020**

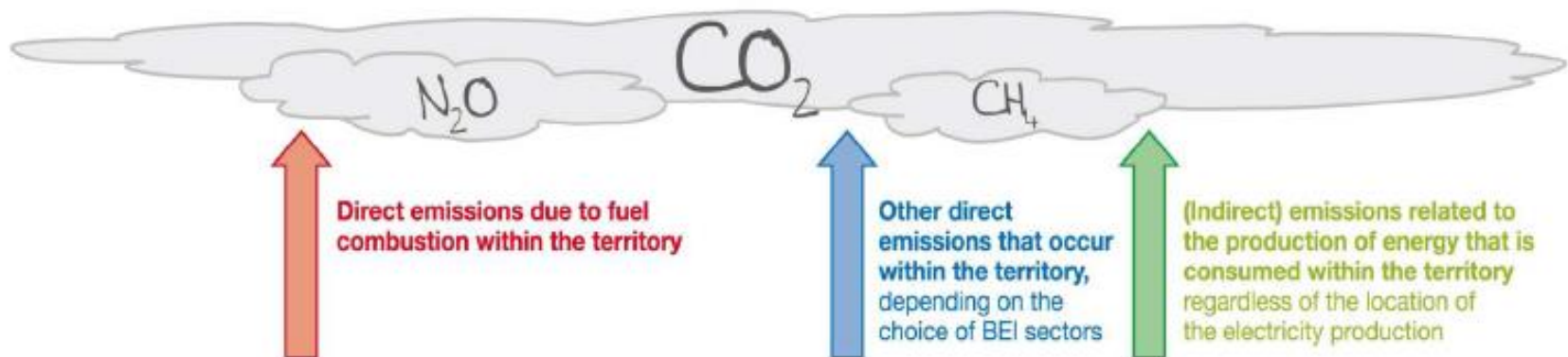
### **Göteborg:**

**21% emission  
reduction by 2020  
<2 tons/capita by 2050**

### *III. CO<sub>2</sub> baseline emission inventory (BEI) and risks and vulnerabilities assessment (RVA)*

A sound knowledge of the local situation is necessary  
→ carry out an **assessment of the current framework** which includes:

- CO<sub>2</sub> baseline emission inventory (BEI)
- Risks and vulnerabilities assessment (RVA)
- The **data collection process** should be well documented



## *IV. Comprehensive measures*

### *Covering key sectors of activity*

The SEAP has to contain a **coherent set of measures** covering the key sectors of activity

(Key sectors in EU Covenant: Municipal, buildings and Transport)

Before starting the elaboration of actions and measures, the establishment of a long-term vision with clear objectives is highly recommended.

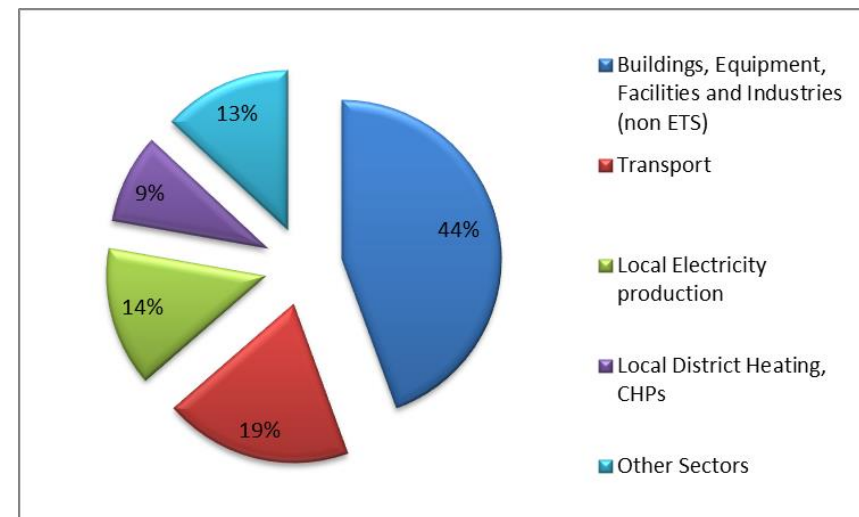


# Priority areas for action EU CoM: Measures in the field of EE and RES

The choice of sectors to tackle and of specific measures to implement is **entirely left to the responsibility** of the Signatory, depending on:

- **political mandate** of the Mayor
- **national framework** (regulations, grants, incentives, etc.)
- **size of the local authority** (availability of human & financial resources, expertise, etc.)

## Breakdown of expected GHG emissions reduction by field of action in 2020



But also...

## Strategic **urban planning**:

The SE(C)AP can be an instrument to prevent rapid and uncontrolled city growth, by promoting mixed land use and encouraging sustainable mobility.

*(Ex. Stockholm: efficient social planning)*

## **Working with citizens and stakeholders:**

The SE(C)AP development and implementation requires coordination with citizens and other actors, consensus-building approaches, reduced duplication of efforts.

## ***V. Strategies and actions until 2020 or 2030 (and possibly beyond)***

*The plan must contain a **clear outline** of the strategic actions that the local authority intends to take in order to reach its commitments in 2020 or 2030.*

*It has to contain **long-term strategy and goals***

***Detailed measures for the next 3-5 years***  
*which translate the long-term strategy and goals into actions, with assigned responsibilities, cost estimations, impact estimations*

## VI. Mobilization of all municipal departments involved

*The SE(C)AP should outline which structures are in place or will be organised in order to implement the actions and follow the results. It should also specify what are the human resources made available.*

### Example

4) Staff capacity allocated

SEAP preparation\*:

- ☒ Local authority
- ☐ Local/regional energy agency
- ☒ External consultant
- ☒ Covenant Territorial Coordinator
- ☐ Other

Full-time equivalent job(s)

8

5

1

***In each municipality/city, different civil servants are involved in CoM. In total 1 FTE is reached by each participating municipality/city with less than 15.000 inhabitants for SEAP preparation and implementation. Municipalities and cities with more than 15.000 inhabitants reach 2 FTE.***



# ***Most common Structure***

The **city management office** is responsible for the administration of the SEAP and the **Environment and health administration** is responsible for developing and following up the SEAP.

**Consultants** aid in conducting background research and communication with some stakeholders.

A **steering committee** for development of the SEAP consists of representatives from the city management office, city development administration, traffic and waste administration, city planning administration and real estate administration.

## ***VII. Engagement of all relevant stakeholders and empowerment of citizens***

The plan has to describe how the civil society has been involved in its elaboration, and how they will be involved in implementation and follow up.



**Build support from  
STAKEHOLDERS:  
if they support the SEAP  
nothing should stop it!**

## VIII. *Financing*

A plan cannot be implemented without financial resources. The plan should identify the key financing resources that will be used to finance the actions

### *Example*

7) Foreseen financing sources for the implementation of your SEAP

Please specify the %

<input checked="" type="checkbox"/> <b>public</b>	<input checked="" type="checkbox"/> Local Authority's own resources	<input type="text" value="54"/>
	<input checked="" type="checkbox"/> National Funds and Programmes	<input type="text" value="36"/>
	<input checked="" type="checkbox"/> EU Funds and Programmes	<input type="text" value="0"/>
<input checked="" type="checkbox"/> <b>private</b>	<input checked="" type="checkbox"/> Private	<input type="text" value="10"/>
		<input type="text" value="100"/>

## *IX. Monitoring and reporting*

The SE(C)AP should contain a brief outline on how the local authority intends **to ensure the follow-up of the actions and monitor the results**

For each action, progress based indicators should be defined

Regular adjustments of the actions based on new opportunities/findings



## *X. SE(C)AP submission and filling the template*

Covenant signatories commit to submitting their SECAPs within **2-year following adhesion**

The SE(C)AP must be **uploaded in national language** via the Covenant of Mayor's website + **online SEAP template in English.**

The template has to be filled carefully with sufficient level of detail, and should reflect the content of the SE(C)AP.

**An adaptation of the 10 key principles is needed in order to better suit the different reality of local authorities in other regions of the world, compared to EU signatory cities.**

**Which key principles are already applicable?**

**Which ones need to be reconsidered?**

*Global Covenant Technical working groups already dealing with it...to be discussed on wednesday*

# Stay in touch

**Silvia.rivas-calvete@ec.europa.eu**



**EU Science Hub: *ec.europa.eu/jrc***



**Twitter: *@EU\_ScienceHub***



**Facebook: *EU Science Hub - Joint Research Centre***



**LinkedIn: *Joint Research Centre***



**YouTube: *EU Science Hub***