



NL Agency
*Ministry of Economic Affairs,
Agriculture and Innovation*



Code of Conduct on Digital TV Service Systems Results 2010

Hans-Paul Siderius
NL Agency
24 November 2011

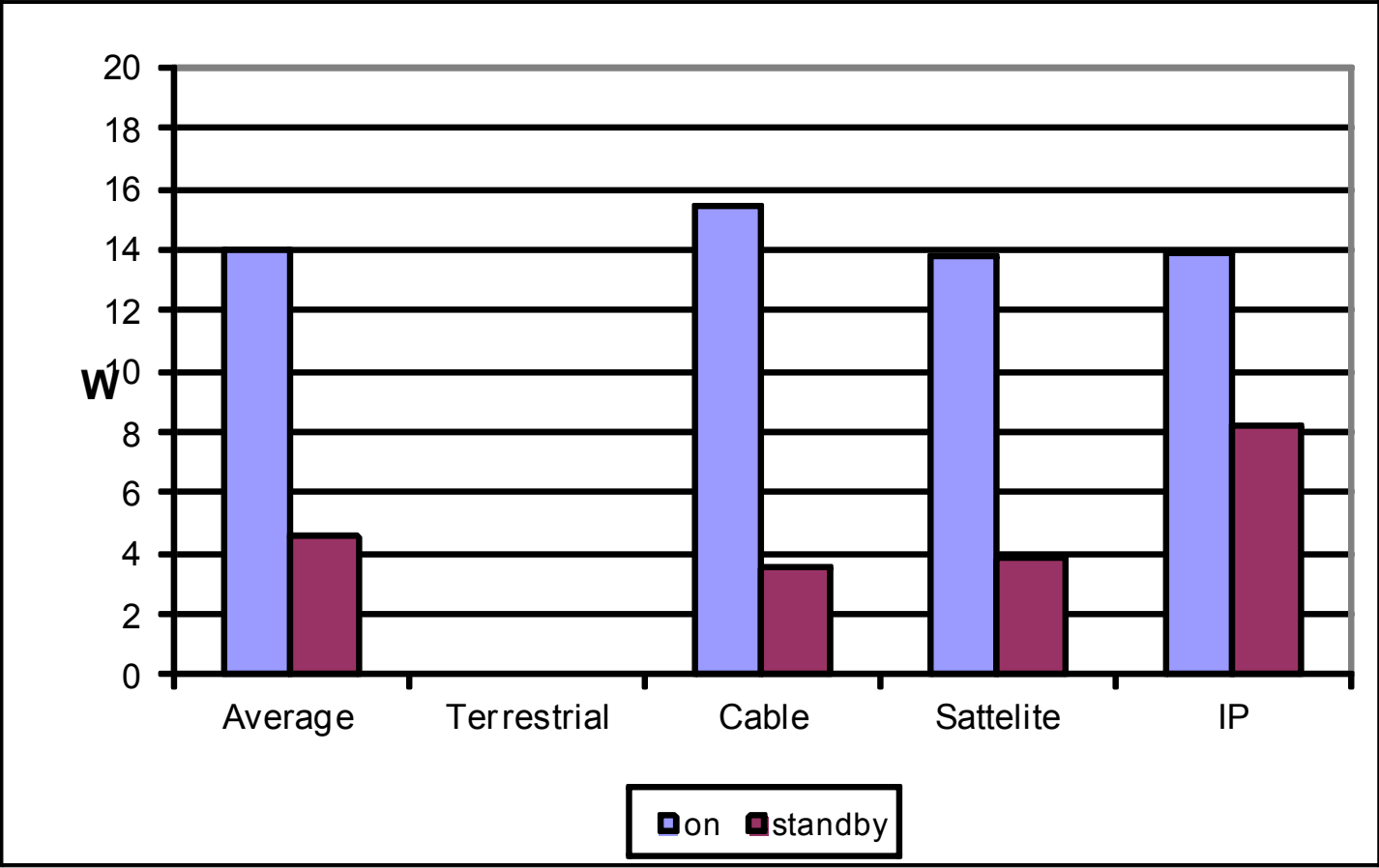


Overview of results 2010

- Reports by: Pace, Swisscom and Technicolor
- Number of models reported: 22
- Models complying: 18 (82 %)
- Models with APD: 3 (14 %); for 15 models APD not supported at customers' request
- Type of STB:
 - cable: 3 (all complying)
 - satellite: 14 (all but one complying)
 - terrestrial: none
 - IP: 1 out of 4 complying

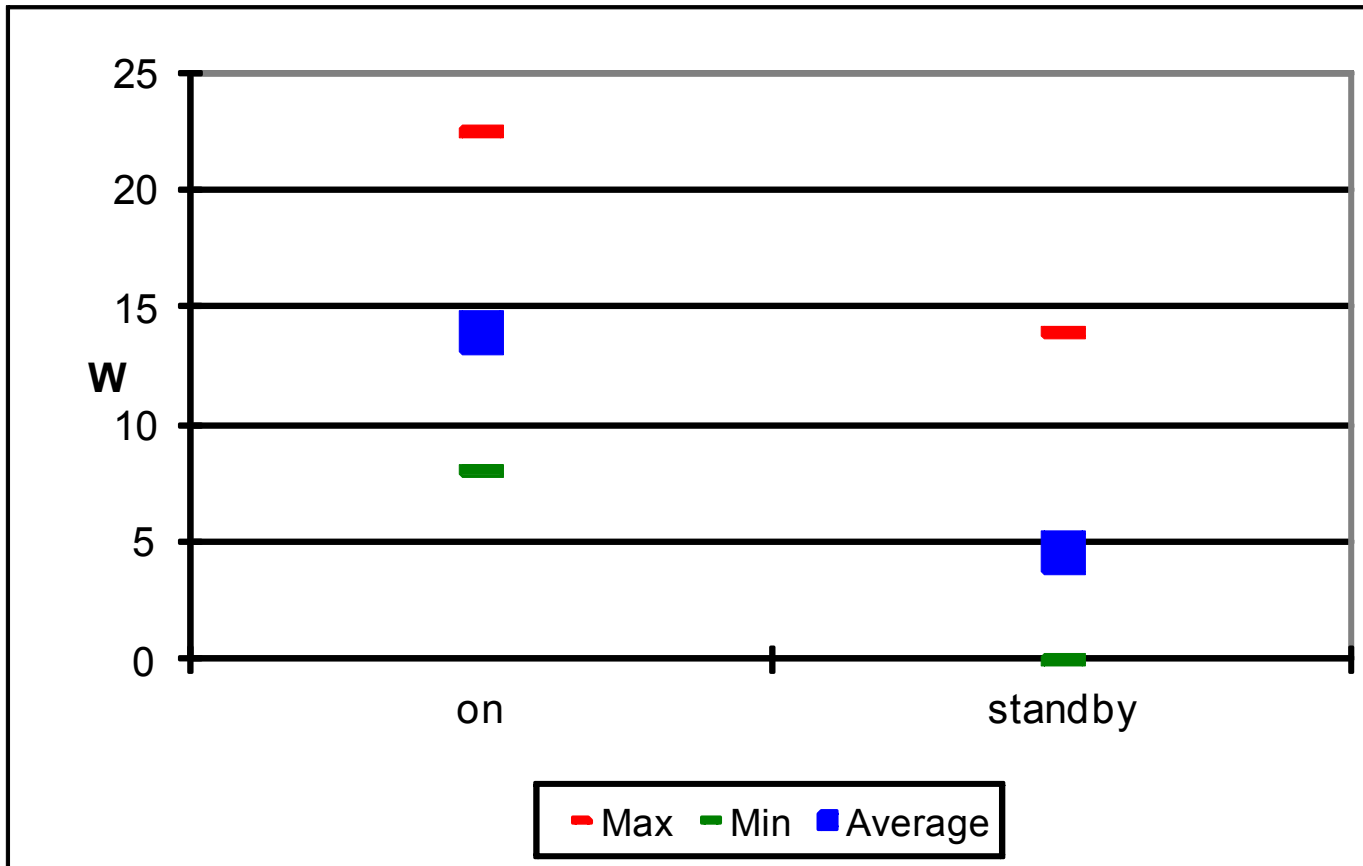


Results 2010



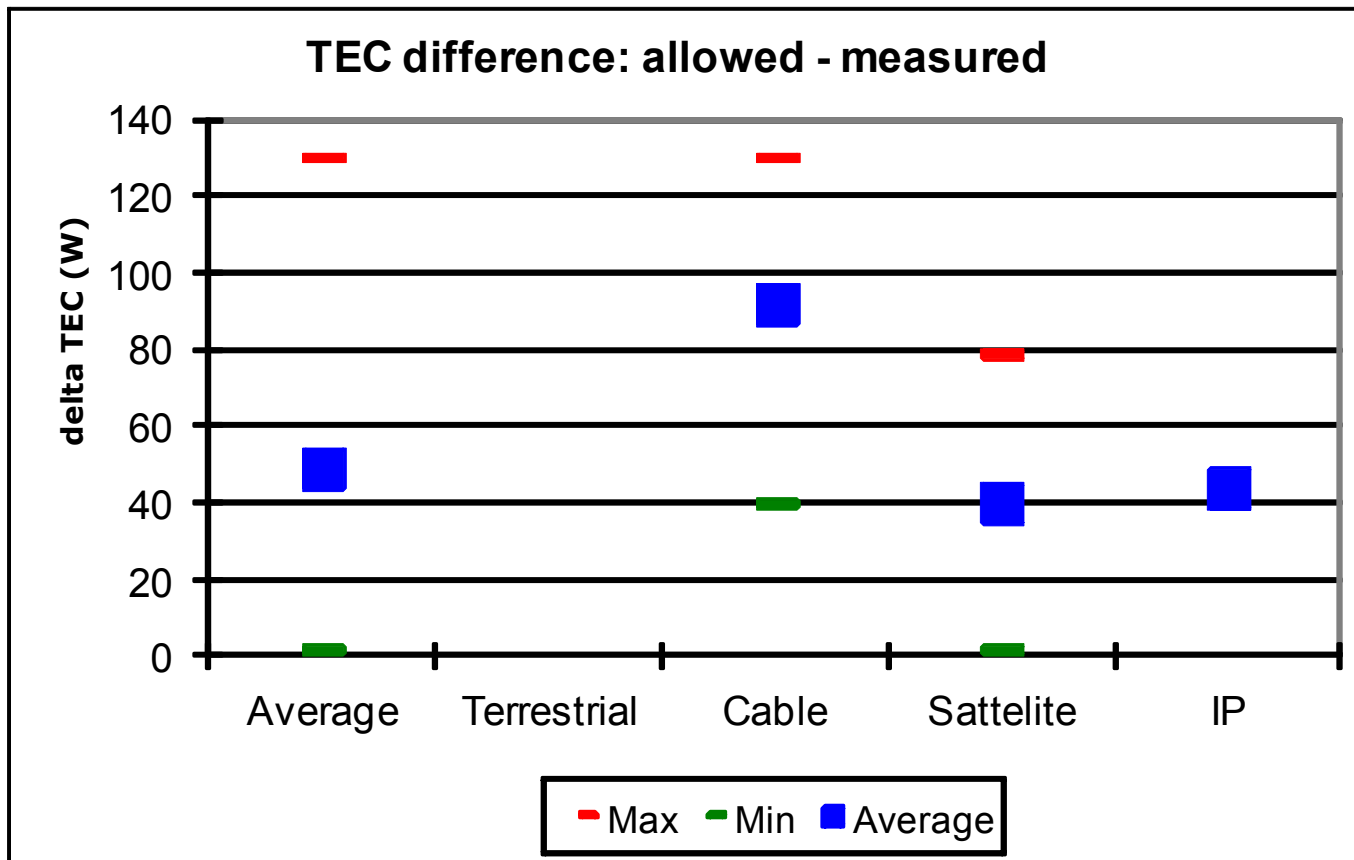


Results 2010: variation in power consumption



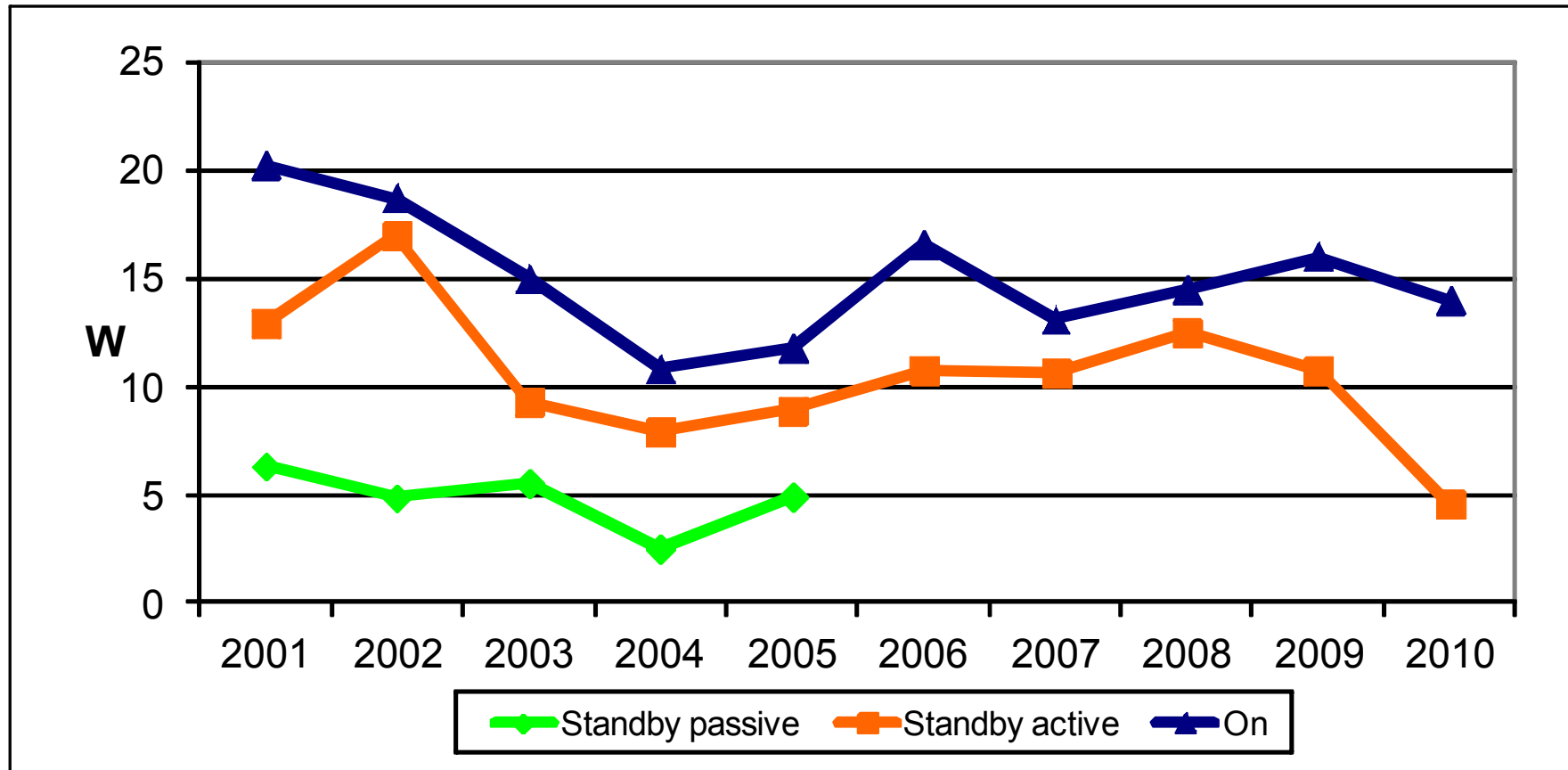


Are targets ambitious enough?



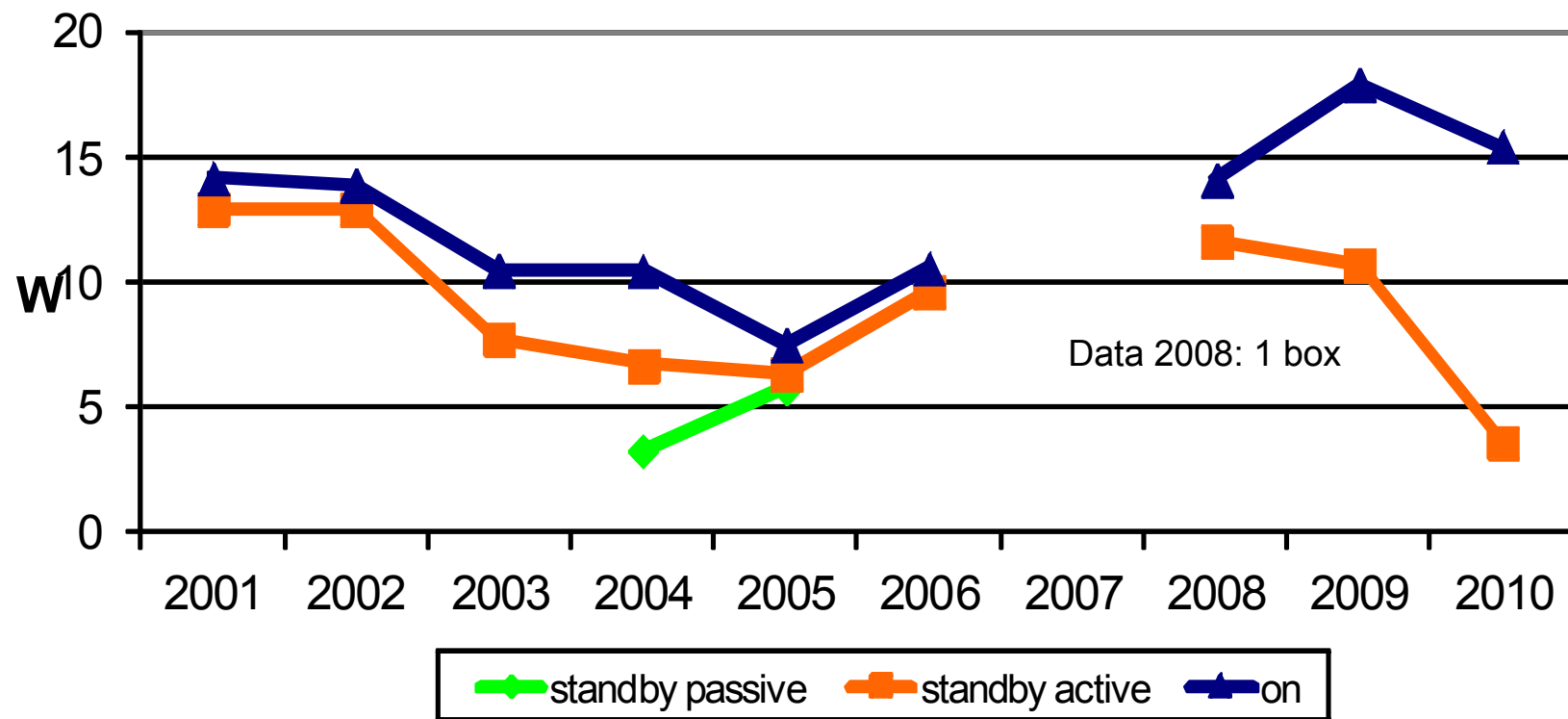


Results 2001-2010



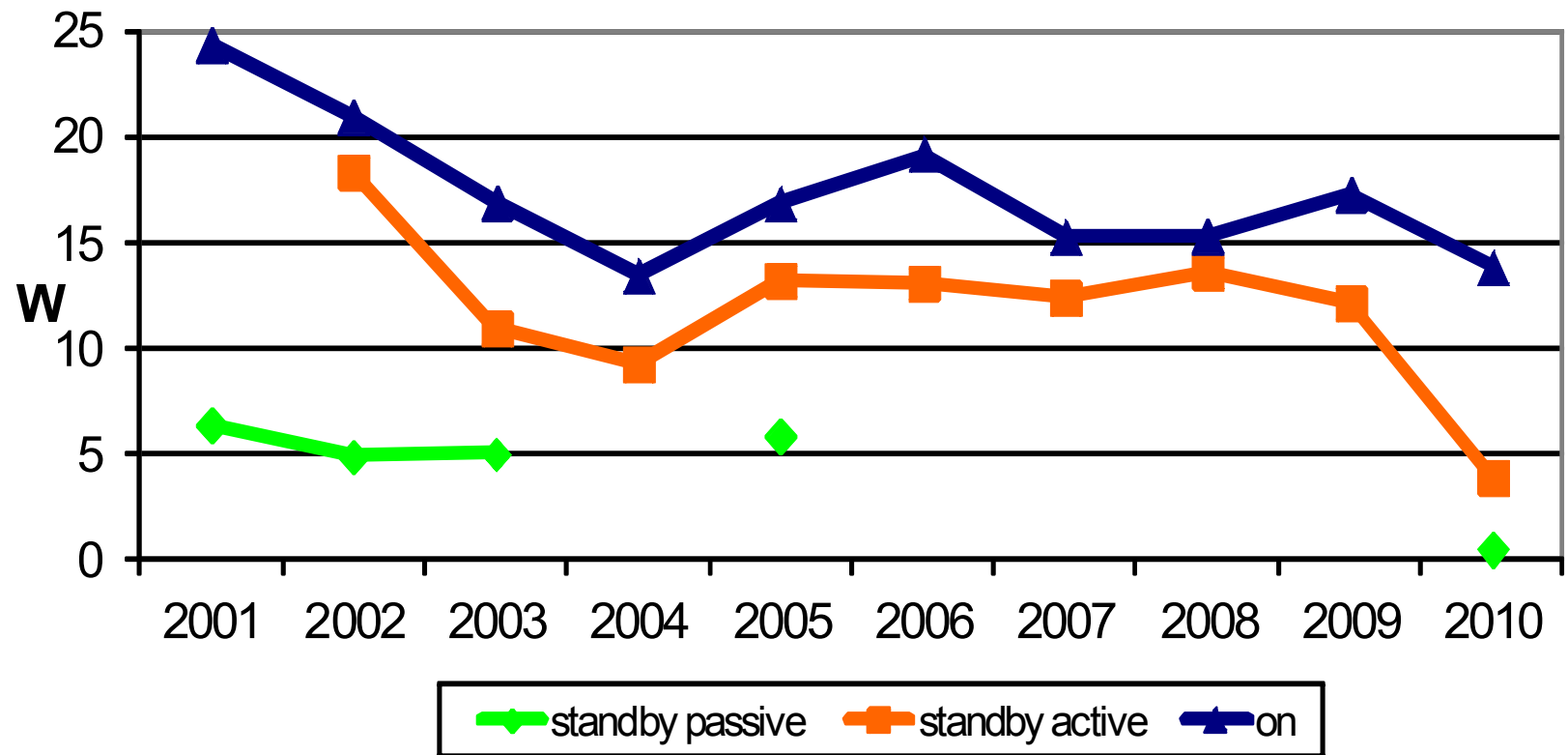


Power consumption set-top boxes 2001-2010 Cable



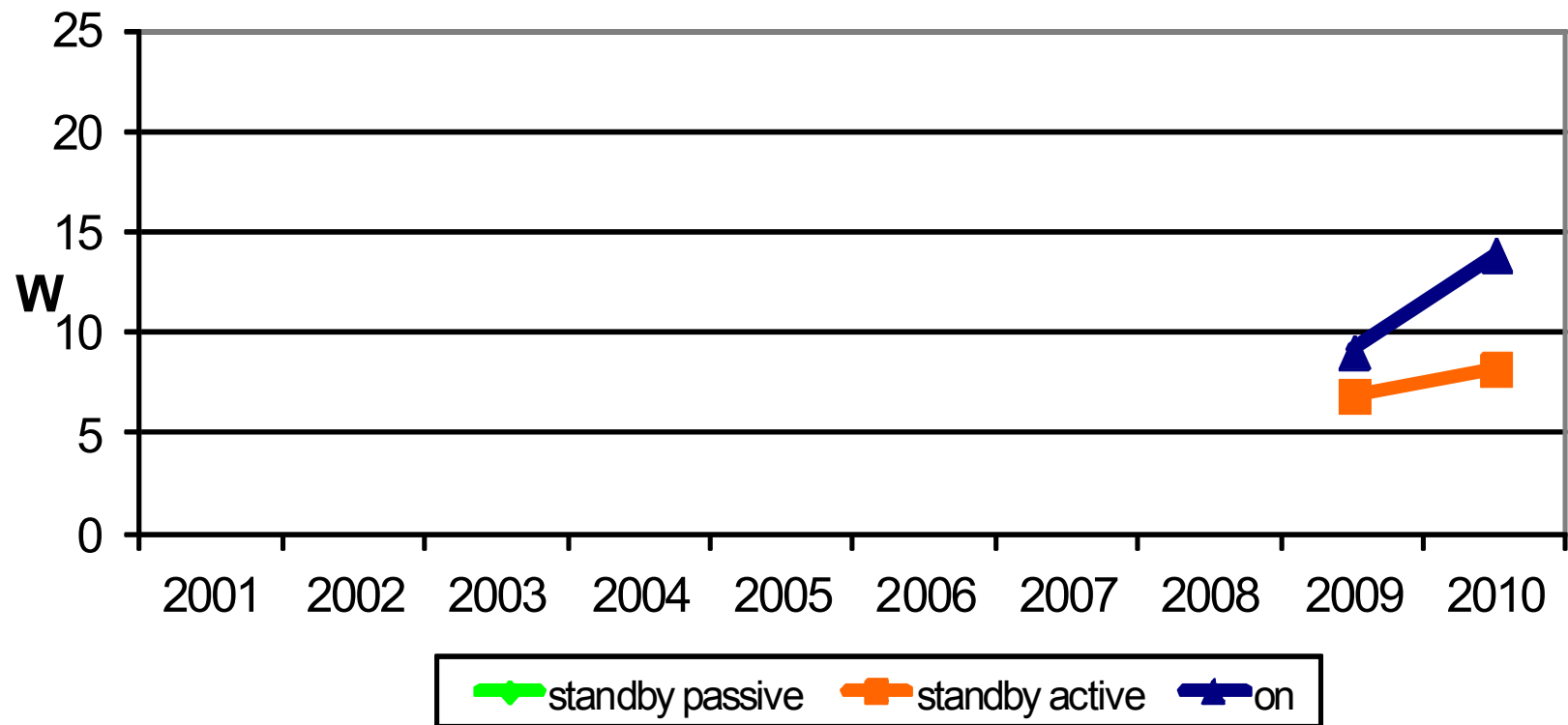


Power consumption set-top boxes 2001-2010 Satellite





Power consumption set-top boxes 2009-2010 IP





Conclusions and discussion

- On-mode power consumption is decreasing again, except for IP boxes.
- Standby (active?) power consumption is decreasing. However, differentiation between standby active and standby passive unclear.
- APD seems not (yet?) accepted by customers.
- Targets could be more ambitious.



Power management and APD

